

Commercial

Massey University Massey

Product Used Expona Flow Light Industrial Concrete 9860

Massey University Business Studies department in Palmerston North recently underwent a refurbishment which required new flooring throughout the building.

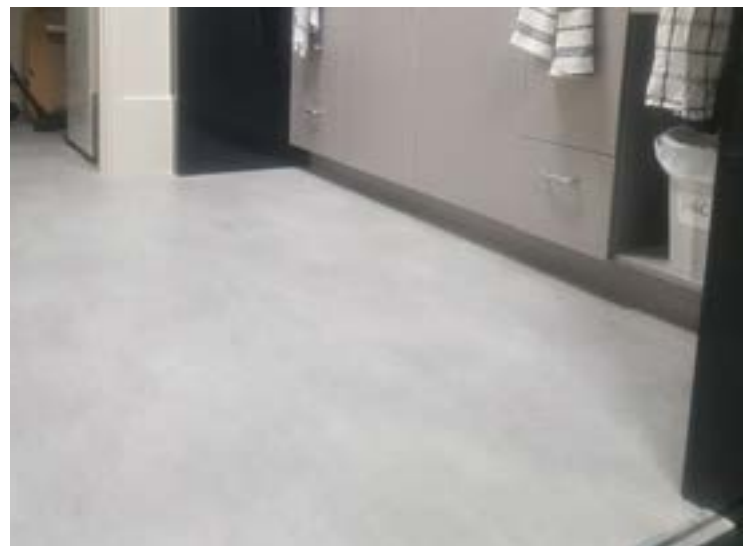
"We worked alongside local building firm Colspec Construction on this project which saw the main three floors refurbished with new carpet tiles and the Polyflor Expona Flow 9860 including the two stairways (one of which went down 2 flights into the basements)"

We used a total of 100 lineal meters of vinyl to cover the areas which were Tea stations, Storerooms and the stairways. The flexibility of the non-directional install allowed us to minimise waste and eliminate joins in some areas.

This vinyl was chosen for its performance characteristic as the stairways will get extensive foot traffic." - Darryl Lumsden, Assistant Commercial Manager, Carpet King - Flooring Design

The Expona Flow concrete look accurately recreates the appearance of weathered concrete with the addition of fine cracks and a sandy surface decoration, these industrial concrete floors satisfy the trend for unfurnished, reclaimed textures within modern interiors.

- Featuring a polyurethane reinforcement (PUR) for improved cleaning and maintenance
- Encompasses beautifully replicated wood and striking abstract effects with the advantage of performance
- Provides a continuous, impervious and hygienic flooring solution



EXPONA FLOW