

# PROJECT BRIEF

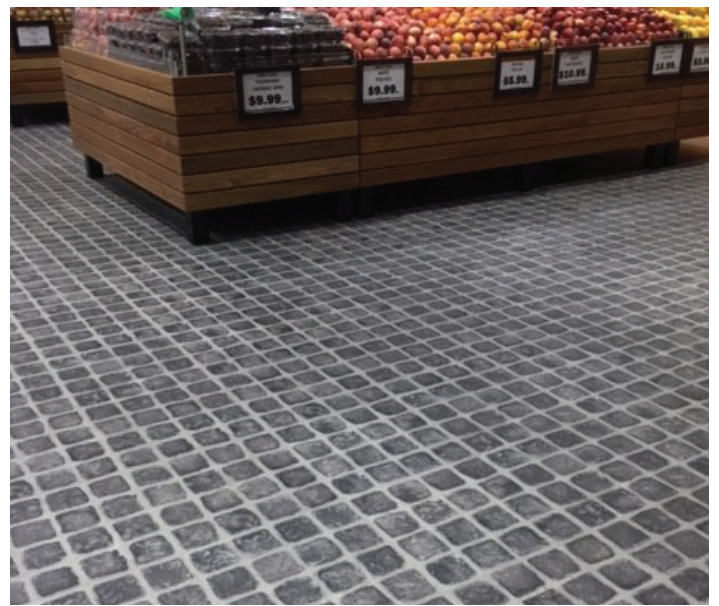
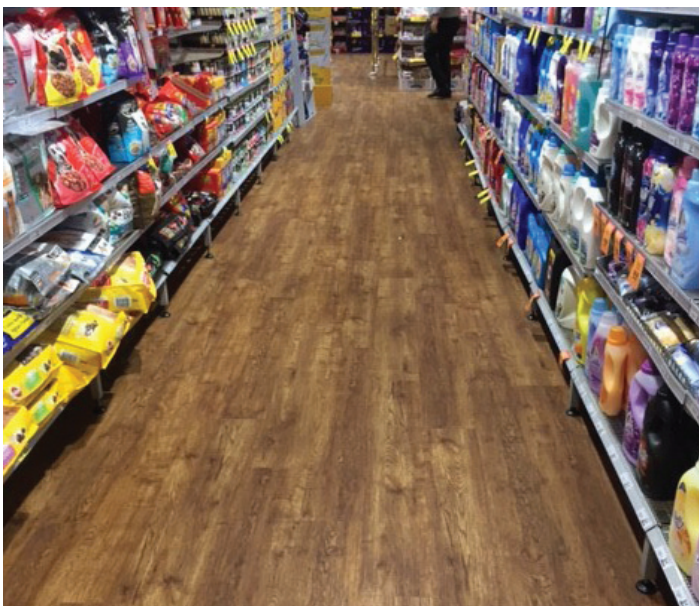
## PROJECT BRIEF

PROJECT: IGA  
LOCATION: Summerhill NSW  
DESIGNER: Loop Creative  
INSTALLER: Fab Floors  
PRODUCTS: Expona Superplank – Honey Oak 1914 & Expona Design – Cobblestone 7104



IGA in Summerhill NSW offers fresh produce and is loved by their local community. The store recently underwent a refurbishment and Polyflor's Expona Design and Expona Superplank ranges were selected for the flooring throughout. Expona Design 'Cobblestone 7104' was featured within the fruit and vegetable section of the store which complements

the wooden crates, while Expona Superplank 'Honey Oak 1914' was laid in the aisles and checkout areas providing a luxe timber look design without the hassles of ongoing maintenance and sanding. Based on the foot traffic the IGA store gets on a daily basis, vinyl flooring was the perfect choice as it is hardwearing, durable, and also very easy to clean.



[www.polyflor.com.au](http://www.polyflor.com.au) 1800 777 425 [sales@polyflor.com.au](mailto:sales@polyflor.com.au)