



Welcome to Polyflor

Commercial and Residential Flooring

Contents



Welcome to Polyflor	4-5
The Environment	6-7
Recofloor	8-9
CSR	10-11
Polyflor Credentials	12-13
Service & Support	14-15
The Design Service	16-17
Low Maintenance	18-19

Product Families

Homogeneous Flooring	22-23
Safety Flooring	24-25
Heterogeneous Sheet	26
Acoustic Flooring	27
Luxury Vinyl Sheet	28
Loose Lay Tiles	29
Luxury Vinyl Tiles	30-31
ESD Flooring	32
Semi-Flexible Tiles	33
Sports Flooring	34
Rubber Flooring	35
Flooring Accessories	36
Wall & Ceiling Cladding	37

Market Sectors

Experts in Healthcare	40-41
Excellence in Education	42-43
Retail Interiors	44-45
Long Life in Leisure	46-47
Specialist Care	48
Housing Sector	49
Polyflor at Home	50-51
A Stylish Workplace	52
Public Sector	53
Specialist Applications	54

Testimonials	55
--------------	----

Welcome to Polyflor

Founded in 1915, James Halstead PLC, the parent company of Polyflor Ltd, pioneered the development of homogeneous vinyl floor coverings. We pride ourselves on commitment to quality, customer support & sustainability.



Founded in 1915, James Halstead PLC, the parent company of Polyflor Ltd., was originally a northern textile company until the 1950s, when it pioneered the development of homogeneous vinyl floor coverings.

Almost one hundred years later and still manufacturing in Manchester, England, the company continues to go from strength to strength as a global organisation with dominant market share in the UK and listed on the AIM stock exchange with a nine figure turnover.

This success is largely attributed to the depth of our customer focus and continuous improvement.

Recent investment into our new heterogeneous sheet manufacturing site in Teesside has expanded production capability and warehousing capacity, enabling further growth to the business.

Commitment to Quality

A quality-driven organisation, the manufacturing processes and systems at Polyflor are ISO 9001 certified. We test our products to a wide range of international standards, including slip resistance tests and stringent VOC emissions tests, to support performance claims.

Following on from the Queen's Award for Enterprise, for outstanding and continuous achievement in the category of International Trade in 2006, James Halstead PLC achieved this award again for 2011 and in 2007 was awarded the Queen's Award for Innovation in relation to the Polysafe family.

Polyflor invested in a purpose built Training School on site, offering two, three and four day floor-laying courses intended to develop and refresh existing skills.

Customer Support

Polyflor has dedicated and experienced personnel within its sales, marketing, technical and design departments, to provide comprehensive and diligent support to our customers.

To ensure excellent product availability, Polyflor has developed strong relationships with its extensive network of distribution partners throughout the world. Investment has been made in new and improved warehousing facilities, enabling us to hold even more stock, ensuring availability and fast lead times for our customers.

The Polyflor website provides an easy to use reference point for product specifications, technical data, colours and samples. We now also have a free Polyflor app for the iPad®, allowing customers to browse our entire product portfolio, download product literature and request samples.

Sustainability

Minimising the environmental impact of our products and operations is highly important to Polyflor. We are ISO 14001 certified - an environmental management system, which encourages and externally monitors challenging objectives for improvement and development in all areas of Polyflor operations.

Polyflor is constantly looking for ways to reduce its carbon footprint by improving waste management; reusing and recycling; energy consumption; transportation and producing low maintenance products.

Whitefield



Oldham



Teesside



The Environment

As a responsible manufacturer, minimising environmental impact is critical to our business ethos and in line with our environmental management system, ISO 14001 we have a clear vision of our challenging objectives and target dates in which to accomplish them. These objectives for continual improvement permeate throughout the whole of Polyflor's products' life cycle.

Life Cycle Analysis

A life cycle analysis is an important way to assess environmental performance from the start to the end of a product's useful life, rather than one aspect of a product's environmental impact, such as raw materials.

The environmental performance of Polyflor's products is assessed through numerous, global schemes, including BRE Global; EN 15804 EPD and GreenTag approval. Polyflor floorcoverings can therefore contribute to BREEAM, The Code for Sustainable Homes, RICS SKA and LEED® credits.

Materials

Our materials are responsibly sourced, predominantly through local suppliers who are ISO 14001 certified as Polyflor, or demonstrate robust environmental management. Up to 85% sustainable material is used in Polyflor flooring, this includes calcium carbonate filler, a natural and abundant resource. Vinyl is made up of 43% oil (ethylene) and 57% salt (chlorine) - salt being one of the world's most abundant natural resources. We do not use hazardous substances such as formaldehyde or heavy metals and the plasticisers we use are the most tested and not classified, so do not need authorisation under REACH (Registration, Evaluation, Authorisation & restriction of Chemicals). A range of ortho-phthalates and non phthalate alternatives are used across Polyflor's vinyl product collection.

Manufacturing & Logistics

Energy consumption levels have the greatest impact on global warming, Polyflor minimises its contribution to this as one of the most energy efficient floorcoverings to manufacture. The amount of energy required per m² of material produced has fallen by 46% since 2000. Since this time carbon emissions have been reduced by 17,612 tonnes (as at the end of 2013). This reduction is due to ambitious environmental objectives we set ourselves in accordance with ISO 14001. It takes less energy to produce our vinyl than other plastics and linoleum and with a typical 20-25 year life, fewer replacements are required. Embedded energy consumption is further reduced when recycled material is used in place of raw materials.

Water use minimisation is also important for the environment. On site, rainwater is stored and used to substitute mains supply, saving a valuable, natural resource. 96% of the water used is recycled water, with just 4% coming from mains supply. Despite increasing production volumes there has been significant progress on site to reduce wet and dry waste.

Polyflor distributes product globally, with efficiency through the transportation of full, bulk loads. Fuel efficiencies are also maximised through Polyflor's Euro 5 compliant HGVs and driver awareness to minimise fuel consumption.

Performance & Maintenance

Polyflor vinyl flooring is sustainable and fit for purpose, so there is no compromise on durability, performance and choice.

The in-use phase of the resilient flooring life-cycle accounts for at least 80% of its environmental impact. Therefore all of our ranges are designed with low maintenance features, whereby energy intensive cleaning is not required. PU and PUR ranges are the easiest to clean, ensuring that use of water, polish, strippers and chemical cleansers are significantly reduced.

VOC emissions of our product ranges are all below the strictly set accepted levels with no negative contribution to indoor air quality and have passed the most stringent, independent VOC emissions tests including Indoor Air Comfort Gold; Afsset; AgBB and FloorScore®.

End of Life

Vinyl is 100% recyclable and unlike most alternative materials, it can be recycled many times over without losing performance.

Polyflor is the largest vinyl flooring manufacturer in the UK, producing a wide range of products. Recycling post production waste is significant and a typical part of our daily operations, although minimizing all waste streams is the priority. On average recycled content is 25%, a figure used across many high volume product ranges.

Polyflor actively encourages post consumer waste to be recycled. We have seen this increase year on year (547 tonnes were recycled in 2011, with 1,013 tonnes recycled in 2012) with reclaimed vinyl off-cuts going back into new flooring. If it is not possible to include back into new flooring due to contamination (this is usually uplifted flooring), it is recycled into other useful products, such as road traffic cones. Polyflor is a founding and funding member of Recofloor, the UK's leading vinyl flooring take-back scheme. This initiative was devised to engage with specifiers, contractors and distributors to encourage the industry as a whole to recycle their waste vinyl flooring.

For more information on Polyflor's environmental commitments, please request or download our latest Sustainability Report.





The flooring industry is not bound by law to recycle waste, but we are actively seeking to recover and recycle post consumer waste vinyl flooring to minimise our and the flooring industry's environmental impact and close the loop of our product's life cycles.

- We are a founding and funding member of Recofloor, the industry's vinyl take-back scheme for recycling end of life post consumer vinyl flooring.
- We recycle installation off-cuts, uplifted flooring and old stock roll-ends and samples.
- We recover and recycle into new flooring or other useful products such as traffic cones.

In The Beginning

A major challenge with recycling post consumer waste has been the logistics of retrieving the material, rather than actually recycling it. To try and tackle this issue and actively encourage more waste vinyl flooring to be recycled a working group was formed in 2007 with all vinyl flooring manufacturers on board and managed and coordinated by waste management company, Axion Consulting. Funding for this reclaim and recycle initiative came from WRAP (Waste & Resources Action Programme). Once the trial period and government funding had ceased, members had to decide upon the scheme's fate. Polyflor continued to run the scheme with another UK manufacturer and in 2009 Recofloor was formed. As a founding and funding member of Recofloor, Polyflor has helped develop the scheme into the success that it is today - supporting financially, driving the scheme through sales and marketing and logistically supporting with collections, sorting and ultimately recycling.

Recofloor's Progress

Since 2009 Recofloor has achieved a great deal and is now the UK's leading facilitator for efficiently reclaiming vinyl flooring. 2010 was a real turning point for the scheme, which saw Recofloor winning the CIWM (Chartered Institute of Wastes Management) Award for Environmental Excellence in the category of SME Innovative Practice. Another great initiative was Recofloor's 'Cost Calculator', which allows contractors to calculate how much it would cost to send their waste to landfill, so they can see the savings they will generate by using Recofloor instead.

Increasing the reclaimed volume of quality vinyl waste for recycling is continuously improving (a key challenge has been to educate members about the importance of the material they send back through the Recofloor scheme, avoiding contamination - not always easy on a busy building site). Volumes are up year on year, with 1,644 tonnes being collected since the scheme started (figure correct as at January 2014), saving 1,315,200 kg or

1,315 tonnes of CO2. This equates to driving the average family petrol car 156 times round the equator or taking 324 cars off the road for a year. This volume equals nearly 548,000m² or enough waste vinyl to cover 76 football pitches.

Many thanks go to our customers who have keenly taken advantage of this unique scheme, but getting distributors on board has certainly contributed to Recofloor's success. By acting as drop-off sites for their customers, distributors have increased the accessibility of Recofloor, making it even easier for contractors to dispose of their waste vinyl flooring and for Recofloor to collect and recycle it. Minimising needless drop-off and pick-up journeys also reduces CO2.

Why Take Part?

- Recofloor ties in with site waste management requirements
- Customers are keen to see their flooring recycled at the end of its life
- Certificates of commitment are awarded to impress and gain new contracts with their green credentials
- Recofloor Awards - Gold, Silver and Bronze awards are issued to members who have significantly recycled
- Recofloor specified as an outlet for vinyl waste in tenders
- Could help achieve extra waste credits for BREEAM & CSH
- Using our drop-off sites is free of charge, for collections and timed collections there are nominal fees, but this could still save our members around 60% by recycling through Recofloor, rather than landfilling

Achievements for 2013

- 410 tonnes of waste vinyl flooring were collected and recycled, representing almost 136,666m² - that's enough to cover 19 football pitches
- 510 collectors
- 68 drop-off sites
- Successful marketing campaigns continued, helping build momentum and recruit more members, both contractors and distributors - including 'bacon butty days' at various drop-off sites
- Successful Recofloor Awards Ceremony held for Recofloor members and Polyflor customers, for a second year running
- Won Gold Award in the International Green Apple Environment Awards 2013, for Environmental Best Practice



In 2013, Recofloor won a Gold Green Apple Award in the Recycling category at the International Green Apple Award Ceremony, arguably the most prestigious environmental award to win.

Yes Please <input checked="" type="checkbox"/>	No Thanks <input type="checkbox"/>
Post installation, clean vinyl off-cuts (smooth or safety vinyl)	Cushion vinyl flooring
Old stock vinyl roll-ends & samples (smooth or safety vinyl)	Non vinyl flooring including linoleum, laminate, carpet, or flooring with jute/fabric backing
Smooth uplifted flooring - depending on condition and quality	General waste including asbestos, rubble, wood, blades, nails, screws etc
	Liquids

Please ensure all material for collection is as clean as possible.

Corporate Social Responsibility



“Corporate social responsibility is the continuing commitment by business to contribute to economic development while improving the quality of life of the workforce and their families as well as of the community and society at large.”

World Business Council for Sustainable Development

Commitment to our Employees

Polyflor is a major employer in Manchester, employing approximately 500 people - most of whom are full-time with permanent contracts and are employed within sales and marketing, graphic design, human resources, I.T, purchasing and finance, as well as production, warehousing and distribution.

As a major employer Polyflor has a responsibility to its employees, ensuring their wellbeing and preventing high labour turnover, which remains extremely low - in fact Polyflor has 25 and 40 year clubs for all employees who have been employed by Polyflor for the respective number of years. Attaining an experienced and knowledgeable workforce is extremely important to Polyflor.

Polyflor recruits from local and surrounding areas and advertises through local media, job centres, agencies and online. We offer graduate training programmes, internships and apprenticeships, in support of younger people wishing to develop their employment skills. Our HR Manager is also a volunteer for CIPD's, the Steps Ahead Mentoring project, designed to help young people improve their employment skills in the local area.

As standard practice, Polyflor has numerous training and development programmes; total compliance to the Equality Act 2010; employment health & safety policies and procedures are in place and employee benefits, including pension schemes, free share schemes, enhanced maternity and paternity pay and Christmas vouchers are available to all staff.

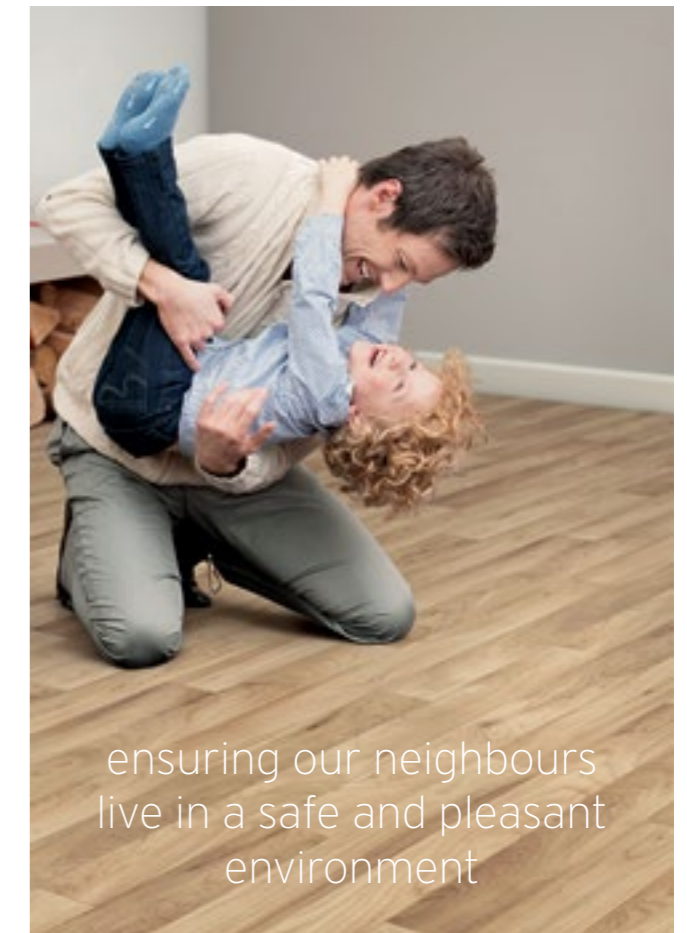
Commitment to our Supply Chain

Polyflor is ISO 9001 and ISO 14001 certified. We also have a responsible sourcing policy and SA 8000 and BES 6001 certification for responsible sourcing. We use approved and trusted suppliers, who are ISO 14001 certified or have robust environmental procedures and who are predominantly local to our manufacturing sites. We use Quality Assessment Questionnaires and follow up with regular meetings and audits.

Commitment to our Communities

Polyflor's Whitefield site is located within a residential area. Duty of care is critical to ensuring that our neighbours live in a safe and pleasant environment. Reducing noise pollution and emissions were therefore pivotal, so half a million pounds was invested in acoustic engineering within the factory to minimise noise and emissions' checks are continuously monitored on site. HGVs must also keep their engines turned off during evening and early morning collections and deliveries at Whitefield.

We continue to provide charitable donations in the local areas and various countries we operate for deserving individuals and organisations. It is important to us as a responsible company to give something back to our local communities.



ensuring our neighbours
live in a safe and pleasant
environment

Polyflor Credentials

We continue to be involved with the development of products that will be environmentally sustainable, easier to use and multi-functional.

- ISO 14001 certification since 2000
- SA 8000 and BES 6001 certification
- First manufacturer to achieve BRE Global A+ rating certification. Now across 27 key ranges within the homogeneous, safety, heterogeneous and LVT flooring categories (ENP427, ENP415 & ENP429)
- EN 15804 EPDs (written to standard ISO 14025) verified by IBU
- Registered approved products with Ecospecifier - Green Tag GreenRate Level A across homogeneous, safety, heterogeneous and LVT ranges (LCARate certification Gold and Silver)
- Polyflor products can contribute to LEED® points
- Active member of UK RFA and ERFMI
- Member of the UK Green Building Council, Green Building Council of Australia and New Zealand Green Building Council
- Fully support VinylPlus
- Active member of EPFLOOR & Recovinyl
- A founding and funding member of Recofloor vinyl take-back scheme
 - Winner of BCE Premier Award 2011
 - Winner of Gold International Green Apple Award 2013
- Up to 40% recycled content
- Up to 85% sustainable material
- Plasticisers used by Polyflor are not classified substances and do not need authorisation under REACH (Registration, Evaluation, Authorisation & restriction of Chemicals)
 - A range of ortho-phthalate and non-phthalate alternatives are used across Polyflor's vinyl product collection
- No hazardous substances used including formaldehyde or heavy metals - REACH compliant
- Passed the most stringent international VOC tests, including AgBB, Indoor Air Comfort Gold, Afsset and FloorScore®
- Polyflor is working with the Carbon Trust's Energy Management programme, which provides commercially viable solutions to help UK businesses and the public sector cut carbon, energy and costs



Service & Support

Our website www.polyflor.com provides a comprehensive reference point for product specifications, technical data, colours, latest photography and samples

Information, Contact & Samples

Our website www.polyflor.com provides a comprehensive reference point for product specifications, technical data, colours, latest photography and samples. Straightforward technical information on a wide range of issues is available in a downloadable pdf format. Printed technical literature is also available, including our in-depth technical manual, floorcare and product specification sheets.



Free Polyflor iPad® App

The free Polyflor app for the iPad® lets you browse our entire product portfolio. Browse through hundreds of images by sector or by colour. View high quality sample scans, product details and specifications, plus order a free product sample. You can email or send images to a printer and also create pdfs of selected images through the My Gallery function.



A Dedicated Team

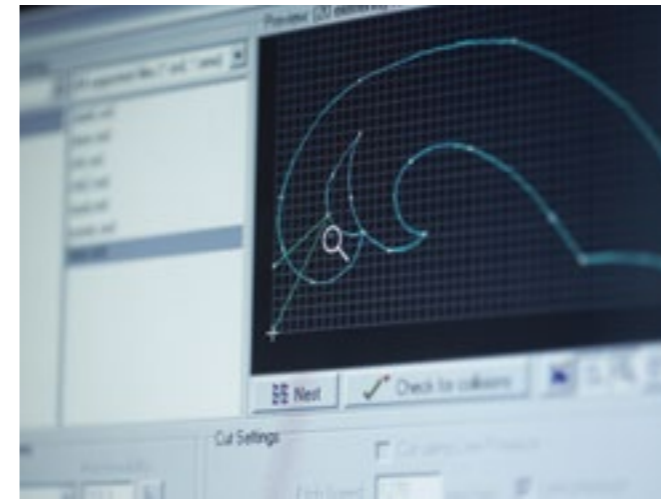
Polyflor has dedicated and experienced personnel within the sales, marketing, technical and design departments, to provide comprehensive support for our customers. We also work closely with our global distribution partners to ensure that support is mirrored throughout the supply chain.

Our sales and technical support staff are ready to assist with queries on issues such as product selection, preparation of subfloor, installation, finishing and ongoing maintenance and our samples department will also respond promptly to sample requests.

Relationships Matter

When you are developing a flooring concept, you need a creative partner with flair and flexibility. Polyflor has a wealth of experience in flooring design for a wide range of sectors. We have helped architects, specifiers and designers create memorable floors for literally thousands of buildings. We will make sure you are supported through every stage of the project.

The Design Service



Design Service

The Polyflor Design Service is a computerised waterjet service that turns thoughts into reality. **Anything and everything is possible** - from logos to landscapes - and our flexible design support service can do as much or as little as required. Polyflor can help with the whole scheme. Everything from designs, colour options, layouts, as well as on-screen CAD rendering.



Flair and Flexibility to Make Ideas Come to Life

There's virtually no limit to the shapes, patterns or pictures that can be created with the support of the Polyflor Design Service. If help is needed with visualisation, our designers can develop ideas and present them in the form of coloured-up illustrations, suitable for client presentation.



Interpretation and Realisation

When the image is agreed, a detailed flooring design is created on computer. This specifies the Polyflor material and colours, as well as the shape and dimensions of every element of the design. When our interpretation is complete, drawings are dispatched for approval or amendment.



You imagine it, we'll deliver it!

Polyflor uses one of the world's most advanced computerised waterjet cutting machines to transform the design into a flooring 'jigsaw', with astonishing precision. The waterjet pressure at the cutter head is 60,000 psi, slicing cleanly through flooring material to an accuracy of +/- 0.1mm, producing any design you require, including school badges, information signs, corporate motifs and children's designs - the possibilities are endless.



The Polyflor Design Service

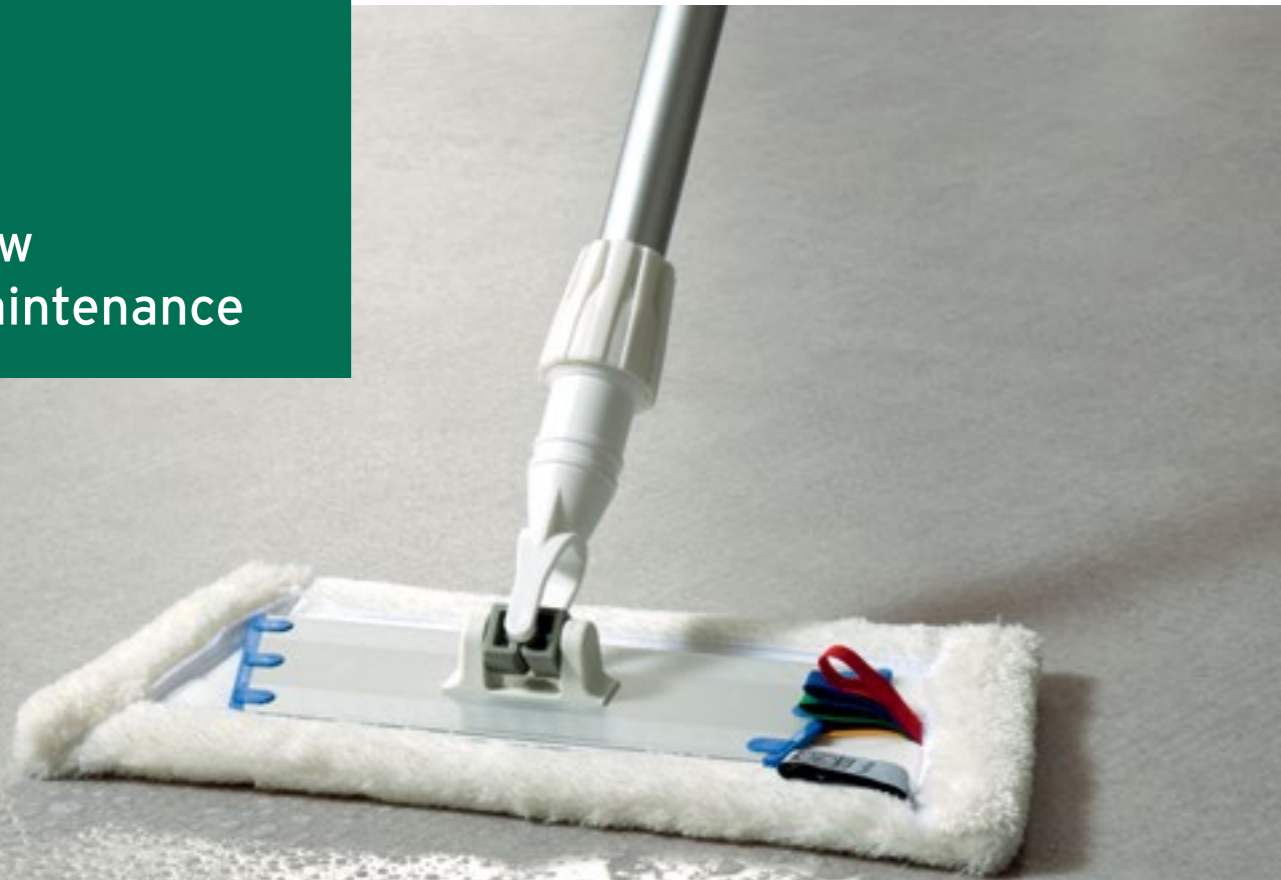
From the first seed of an idea to finished design, if you have a concept for a floor, we can help. We've helped architects and designers to realise stunning floors for hundreds of buildings.

We can provide support throughout the project. Our designers can provide visuals and advise colours and product choices, from simple colour suggestions to themed design layouts to fit with the overall schemes.

It's your opportunity to create exciting, stimulating and memorable floor designs.

Completing the picture

Low Maintenance



Market Leading Low Maintenance

Ease of maintenance has always been a key criterion in the selection of any floor coverings. Any client will wish for their floor to remain in excellent condition throughout its life and for the cleaning process to be as cost-effective and straightforward as possible.

Poor maintenance damages aesthetics, impairs performance, shortens floor life and creates hygiene problems in critical areas. The in-use phase of the resilient flooring life cycle accounts for at least 80% of its environmental impact, given Polyflor floor covering's potential 20-25 year life span. In recognition of this, Polyflor provides low maintenance options throughout the product portfolio.

Our easy to clean PU and PUR ranges ensure that use of polish, water, strippers and chemical cleansers are significantly reduced and thus contribute to significant maintenance cost savings for the life of the floor.

All new ranges launched with the greatest maintenance and environmental benefits built in and existing ranges have had these benefits added. Continuously improving technologies enables flooring to raise the standard in terms of durability, maintenance and performance, sought by the customer.



- All Polyflor products are designed with low maintenance features
- PUR reinforcement is cross-linked and UV cured for superior cleaning benefits, enhanced protection and optimum appearance retention
- Environmentally preferential using less energy, polish, water and cleansing chemicals
- Polyflor homogeneous PUR is polish free for life and Polysafe PUR should never be polished
- Polysafe PUR achieves superior cleaning benefits and facilitates easier soil release, whilst enabling optimum appearance retention
- Economically sustainable, with 48% to 60% maintenance cost saving over a 20+ year life when compared to untreated vinyl flooring

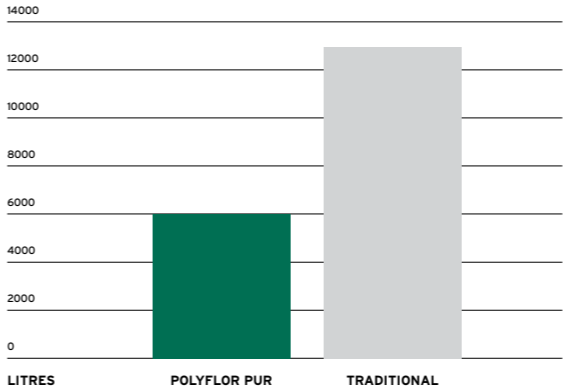
Creating Clean & Hygienic Environments

Vinyl sheet flooring can be welded at the seams, forming an impervious base that facilitates ease of cleaning by eliminating gaps and cracks where dirt can gather.

Polyflor flooring also stands up to the test where hand gel dispensers are housed. Polyflor homogeneous PUR, heterogeneous PUR, LVT PUR and Polysafe safety PUR ranges are compatible for use with the most commonly used alco-based hand gels, some of which have a very high concentration of ethanol. Discuss this further with our experienced Customer Technical Services Department (tech@polyflor.com).

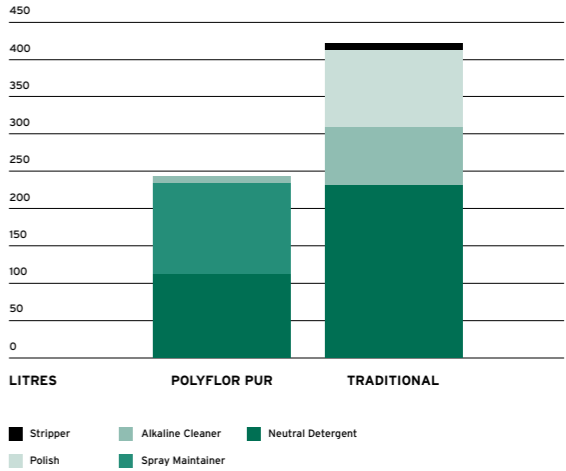
save up to
55%
less water

WATER USAGE 1 year 1000m² PUR vs Traditional vinyl



save up to
60%
on maintenance

CHEMICAL USAGE 1 year 1000m² PUR vs Traditional vinyl



Product Families

We have an extensive product collection, each with specific properties depending on its intended use. Every category is designed with aesthetics and performance in mind.



Homogeneous Flooring



Safety Flooring



Heterogeneous Sheet



Acoustic Flooring



Luxury Vinyl Sheet



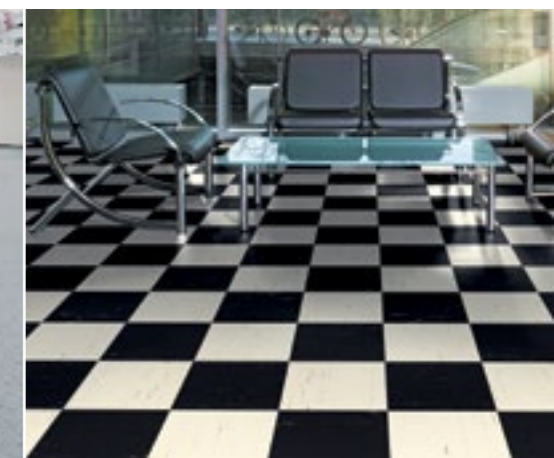
Loose Lay Tiles



Luxury Vinyl Tiles



ESD Flooring



Semi-Flexible Tiles



Sports Flooring



Rubber Flooring



Flooring Accessories
Wall & Ceiling Cladding

Homogeneous Flooring

High performance, low maintenance floorcoverings with attractive designs

From traditional marbled through to sophisticated non-directional decorations, the homogeneous family of products offers excellent durability, reliability, ease of maintenance and endless design possibilities for the most demanding of areas.

Polyflor homogeneous PUR - polyurethane reinforcement cross linked and UV cured - facilitates a lifelong polish-free maintenance regime, superior cleaning benefits, enhanced protection and optimum appearance retention.



Thames Primary School, UK



The Royal Oldham Hospital, UK



Sir Stanley Matthews Academy, Stoke on Trent, UK

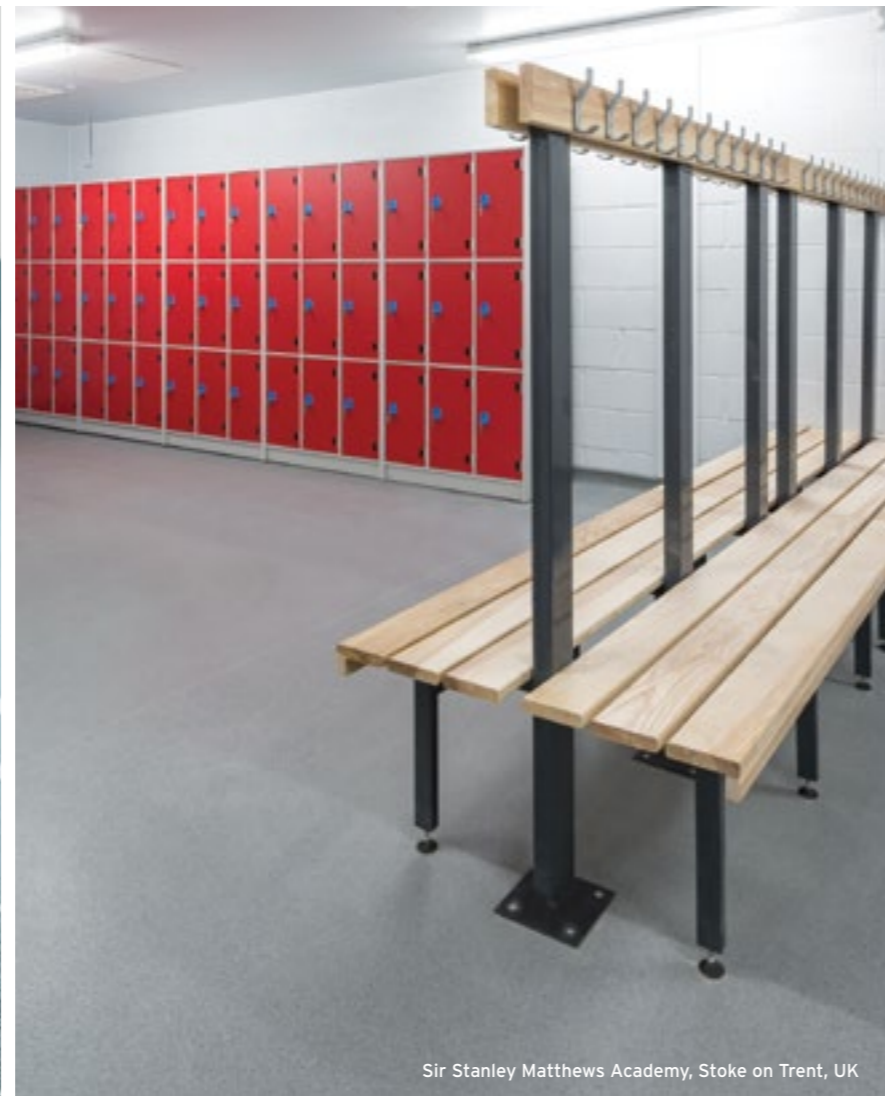
Safety Flooring

A comprehensive safety flooring offer

Safety floorcoverings are designed to provide increased traction underfoot, thereby reducing the potential of slipping in wet areas or locations subjected to regular spillage.

The Polysafe collection covers every application and budget. With full conformance to the European Safety Flooring Norm (EN 13845) and various international standards, Polysafe ranges also comply with country specific requirements such as the HSE

Guidelines in the UK. With every Polysafe range meeting the 50,000 cycles test requirements to EN 13845, this ensures sustainable wet slip resistance is achieved for the guaranteed life of the product. Increasing the friction between foot and floor in wet conditions, Polysafe ranges incorporate the use of slip resistant particles such as silicon carbide, coloured quartz, aluminium oxide and natural recycled aggregates within the vinyl to ensure consistent, sustainable performance.



Design trends
with safety
assured

Increasingly, safety flooring is being specified for customer facing areas at front of house and Polysafe's modern decorative ranges meet the demands of high aesthetics, slip resistance and ease of maintenance. Many ranges within the portfolio feature the exclusive cross-linked and UV cured Polysafe PUR reinforcement for sustainable maintenance benefits including optimum appearance retention, easier soil release and life cycle maintenance cost savings.

Heterogeneous Sheet

Easy to clean floorcoverings with attractive designs

Combining sophisticated designs with superior performance, heterogeneous floorcoverings are ideal for both commercial and residential installations. Our collections offer a wide decorative choice, a highly abrasion resistant vinyl wear layer and the low maintenance performance of polyurethane reinforcement. The floors can also be hot or cold welded, creating a continuous, impervious surface ideal for hygiene critical areas.



North Chadderton School, UK

Acoustic Flooring

Improving acoustic performance in new & refurbished installations

Within the heterogeneous and safety flooring collections, a number of acoustic options are available that reduce impact noise within both domestic and commercial interiors. Providing a solution for the negative effects of noise, our acoustic products also offer underfoot comfort and warmth, as well as our polyurethane reinforcement for enhanced protection and an easier life-long polish-free maintenance regime.



Luxury Vinyl Sheet

Quality designs & durability for the home

The welcoming comfort and authentic designs of our luxury vinyl sheet ranges have been specially developed to enhance domestic interiors, whilst still offering practicability and durability with a polyurethane reinforcement for an easy polish-free maintenance regime. Available in variable widths of 2m, 3m and 4m, luxury vinyl sheet can also be loose-laid for quick and easy installation. The floors can be cold welded to create a seamless finish, and the closed-cell foam backing provides an impact sound reduction of 19dB as well as comfort and warmth underfoot.

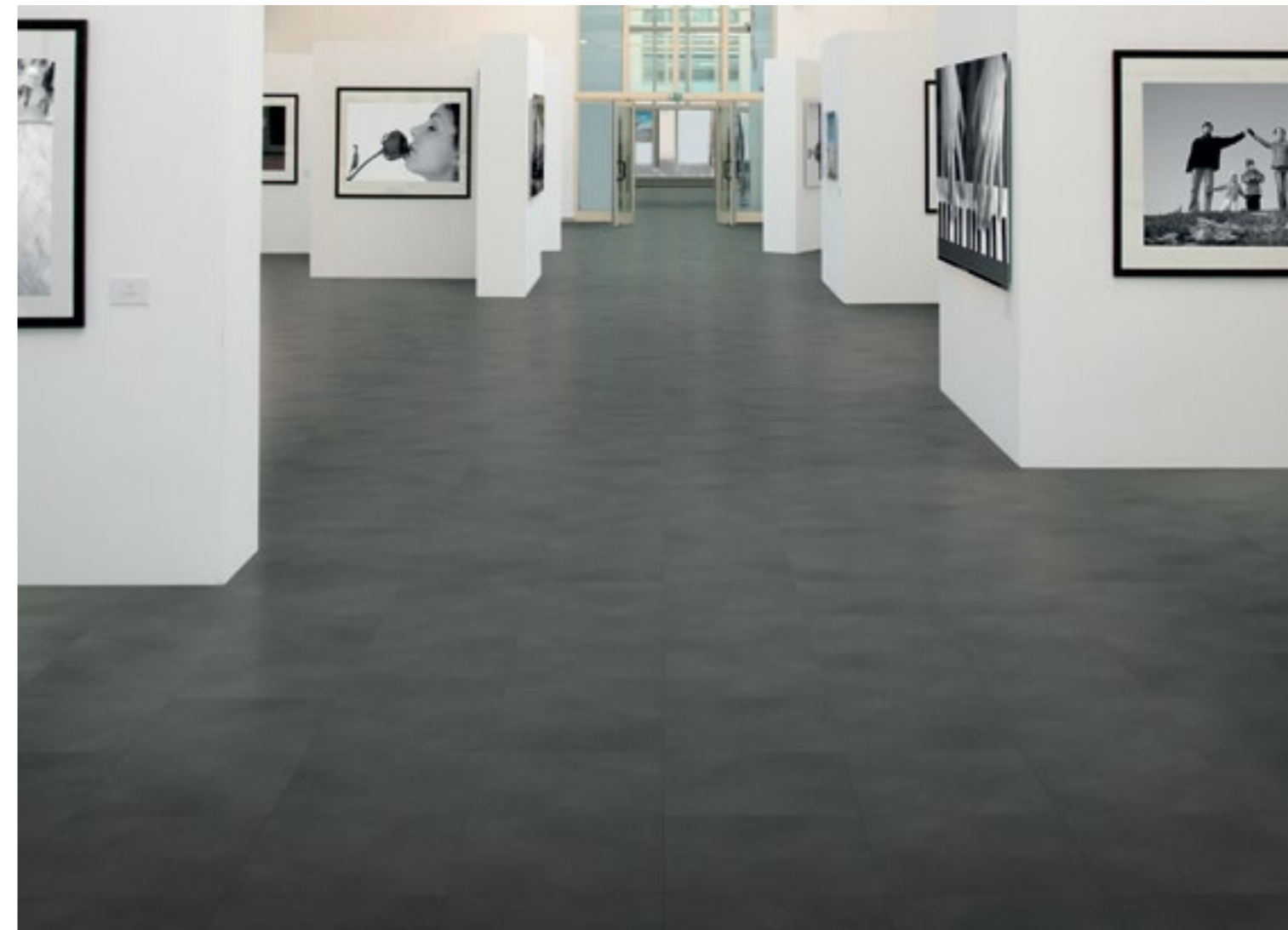
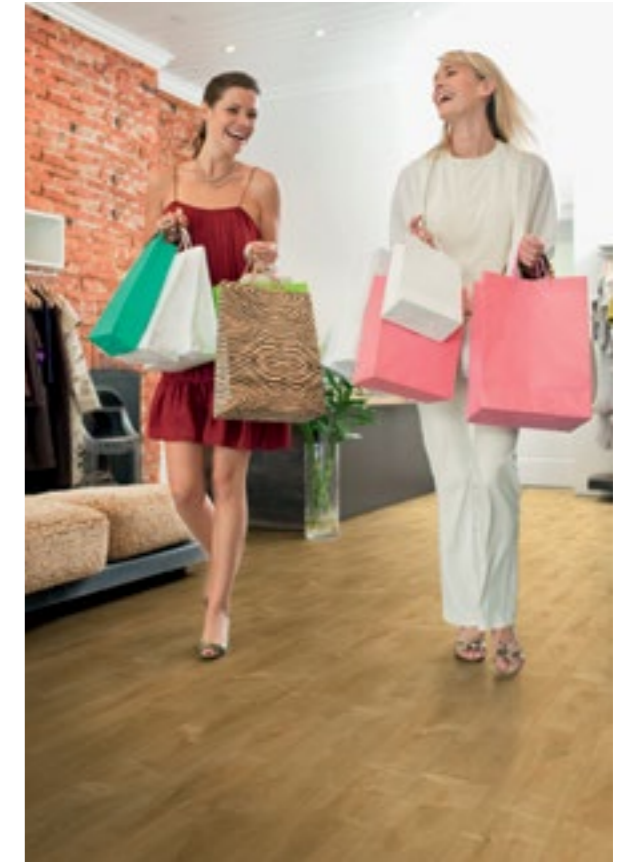


Loose Lay Tiles

No adhesive required for a faster installation

The SimpLay collection is highly practical and design led, featuring authentic representations of natural materials, from highly popular wood types to stone, concrete and textile effects. Adhesive free, Simplay is designed to reduce installation time and minimise disruption, allowing easy access to underfloor heating and cabling, leading to significantly reduced installation time.

Simplay is PUR enhanced, Polyflor's exclusive and robust polyurethane reinforcement which is cross linked and UV cured to provide cleaning benefits, thus reducing ongoing maintenance costs. Designed to withstand everyday wear such as heavy footfall, Simplay makes an ideal choice for a wide variety of heavy commercial areas, including retail and office interiors where reducing installation time and disruption is critical.



Luxury Vinyl Tiles

Endless Design Possibilities

The Polyflor luxury vinyl tile and plank collections replicate the undoubted beauty of natural materials, and feature sophisticated wood, stone, metallic and innovative effects. Design possibilities are endless through the combination of different colours and textures within each collection.

Stunning floors can be created through the use of bespoke Waterjet cutting, or use of readily available accessories such as inlay strips. All collections are protected by an easy to clean, polyurethane reinforcement surface treatment, to help maintain the floors beauty, resilience and practicality.



ESD Flooring

Floors for 'static protection'

Engineered for Electrostatic Discharge (ESD) protection, this product family features Electrostatic Conductive (EC) and Static Dissipative (SD) options in a variety of decorations. Ideally suited for applications in healthcare, pharmaceuticals, electronics and

cleanrooms, the floorcoverings facilitate a uniform flow of static electricity directly to a ground point. Our technical support team will provide expert guidance on specification, installation and floor testing.



Royal Mail, Norwich, UK



Sjúkrahúsið á Akureyri, Iceland

Semi-Flexible Tiles

Economical Flooring Choice

The Polyflex family of commercial grade tiles features a wide range of shades and choice of decorations. Polyflex tiles provide the ideal, economical flooring solution when budgets are particularly tight.

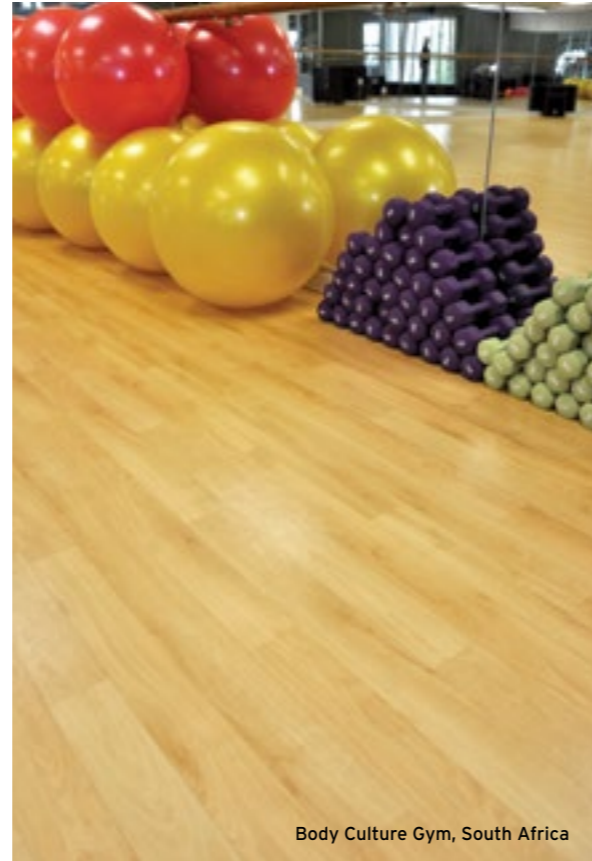


Sports Flooring

High performance, general sports flooring

Polyflor's sport flooring is ideal for indoor gymnasiums, sports halls and fitness centres. It provides the underfoot resilience and long life required by demanding applications and can be laid directly onto concrete or a cradle and batten system.

Meeting Sport England requirements, our sports floors have been designed to meet the performance requirements of a wide range of sports including basketball, football, volleyball, netball, gymnastics, martial arts, tennis and badminton.

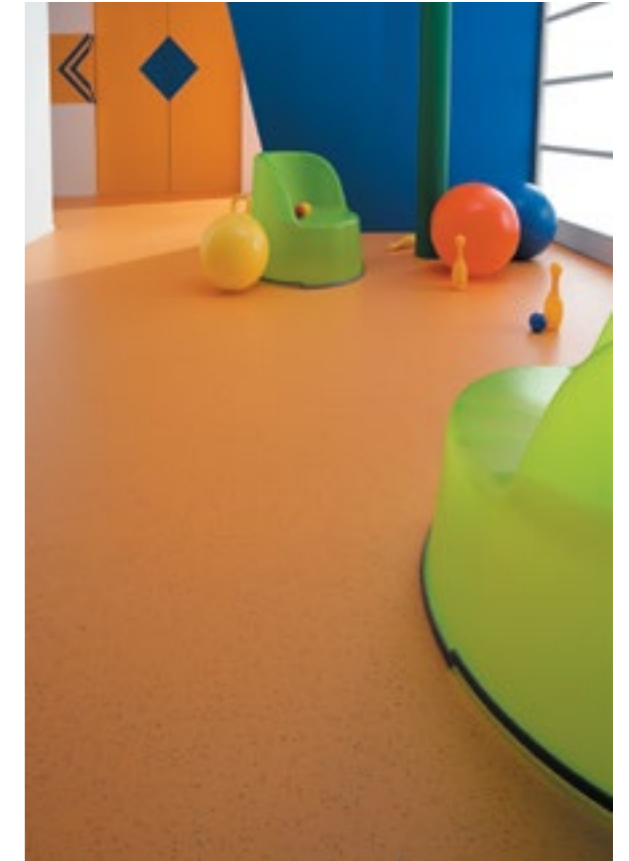


Body Culture Gym, South Africa

Rubber Flooring

A variety of decorative options

The Polyflor rubber collection is designed for heavy traffic areas where durability and underfoot comfort are required. The collection features different decorative options and surface profiles, with a wide colour palette of contemporary shades from which to choose.



Tottington School, Sports Hall, UK



Flooring Accessories

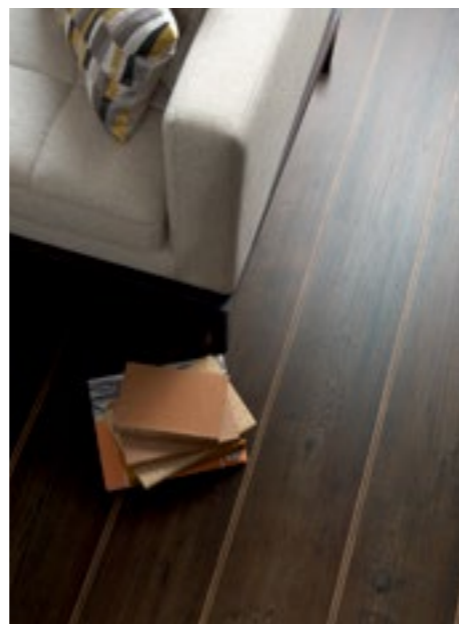
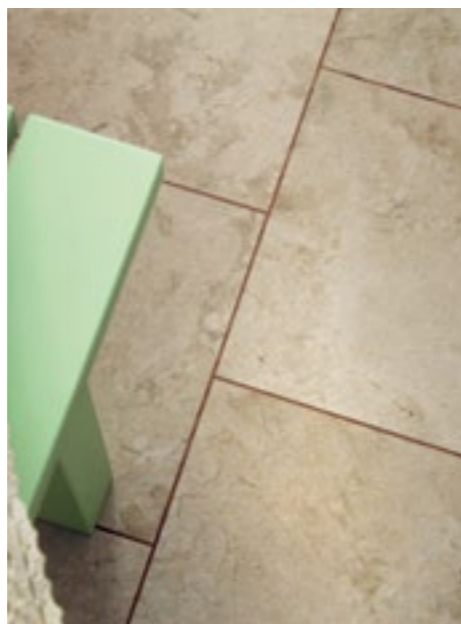
Ejecta

The Polyflor Ejecta ranges of flooring accessories are PVC extrusions designed for use with most vinyl floorcoverings, especially the Polyflor and Polysafe ranges, providing a neat joint between the wall and floor. The range includes skirtings, cove former, capping strips, as well as weld rods that allow for seams to match - or contrast with the floor finish and help to produce continuous floors. Where hygiene is of paramount importance, such as a hospital or other similar location, these easy-to-fit flooring accessories provide a neat and hygienic finishing detail, ensuring a continuous sealed surface.



LVT Borders & Feature Strips

Polyflor offers a stunning range of Grouting Strips, Marquetry Strips, Feature Strips and Borders & Corners to further enhance the beauty and natural effect of the floor or create a unique feature.



Wall & Ceiling Cladding

The Polyclad family of wall and ceiling claddings featuring a polyurethane surface treatment provides a tough and attractive finish for all non-floor surfaces that is ideal for wet and hygiene-critical areas. Other use areas include clean rooms, laboratories and the pharmaceuticals industry, as well as food processing plants and kitchens where hygiene, low maintenance and economy are important.

Polyclad can be welded to our floorcoverings to provide an easily cleaned, impervious floor-to-wall surface that acts as a barrier to dirt and infection and will not shed dust.

The Polyflor Easyclad Installation System has been developed to assist installers installing sheet vinyl to ceilings and walls, as the frame holds the Polyclad and moves it into position, thus minimising the handling of the material. **Training is available upon request.**



Market Sectors

Our collection of products cover a wide variety of sectors. From Education, Healthcare and Housing to more specialist areas.



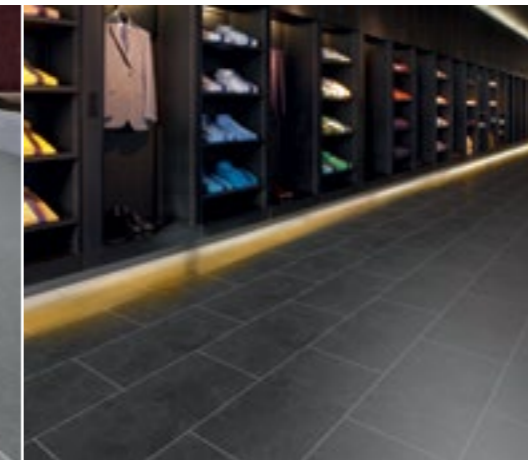
Healthcare



Education



Leisure



Retail



Specialist Care



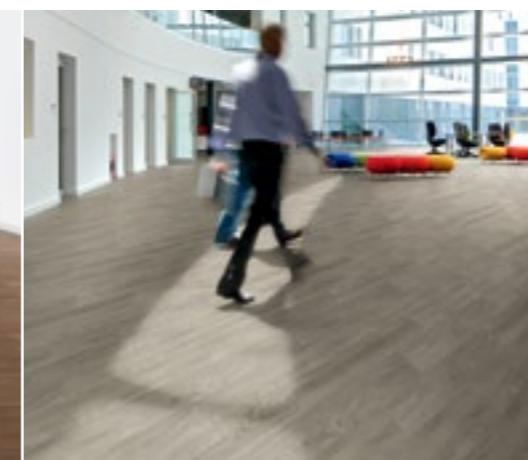
Housing



Polyflor at Home



Workplace



Public Sector



Specialist Applications

Experts in Healthcare

Ideal flooring solutions for a modern healthcare environment

The floor has a vital role to play in creating a relaxed environment that is safe, clean and welcoming for patients, staff and visitors. Our product portfolio provides durable, easy to maintain, safe and hygienic options for every corner of the facility, leading to Polyflor being specified in major hospital projects throughout the world.

All Polyflor commercial sheet vinyl ranges provide a continuous, impervious and hygienic flooring solution which can be

confidently cleaned in accordance with recommended maintenance procedures and approved maintenance products.

Furthermore, Polyflor homogeneous PUR, heterogeneous PUR and Polysafe safety flooring ranges are compatible for use with the most commonly used alco-based hand gels.



Excellence in Education

Facing the toughest tests in schools & colleges

Within an educational facility, different locations will have distinct requirements in terms of flooring. Our broad portfolio of floorcoverings provides solutions for almost every conceivable area. As well as the inherent suitability of our products for main circulation and teaching areas, Polyflor offers floorcoverings with performance characteristics that are ideal for laboratories, gymnasiums, catering, I.T. suites, toilets and changing rooms.

The majority of Polyflor ranges conform to the top European wear ratings for commercial and light industrial applications, making them able to withstand the 'constant punishment' from the high traffic levels in this sector.



Bury Holy Cross College, UK



North Chadderton School, Oldham, UK



Bexhill High School, East Sussex, UK

Retail Interiors

Hitting the high street in style!

Whether for front of house areas critical for retail branding, or back of house locations, Polyflor provides flooring options for all areas.

The choice of floorcovering will have a major impact on the overall retail environment and shopping experience. The wide range of shades, textures and performance available from Polyflor allows the creation of a more varied and stimulating retail environment.

Our commercial LVT collections are ideal for 'front of house' areas, where different zones of interest can be created through utilising and combining different wood, stone, metallic and abstract designs. Highly accurate waterjet cutting can be utilised for corporate logos or intricate floor patterns.



Long Life in Leisure

Flooring for diverse leisure environments

Polyflor has been specified in leisure environments as diverse as sporting stadia, cinemas, hotels, restaurants, fitness centres, airports and aquariums - commercial, busy environments where the last thing you want to be worried about is whether the floor will perform. Functionality, durability and design must come together.

To reassure the specifier, Polyflor conforms to a comprehensive range of internationally recognised standards for fire, slip and abrasion resistance, to name but a few. The majority of Polyflor vinyl floorcoverings successfully undergo independent assessments of appearance retention and durability of a ten year period.



Widnes Vikings Rugby Club, UK



Pure Gym, UK



Slattery Patisserie and Chocolatier, UK

Specialist Care

Create a Safe, Practical & Welcoming Environment

There are various considerations to make when selecting flooring for a care facility. Whether refurbishment or new build the key objectives (user safety, navigation and comfort) are often included on the specification agenda, as well as adherence to strict maintenance and hygiene requirements. Polyflor has a product solution for every room and requirement.

Aesthetics are important for creating that all important homely and welcoming feel and this is achievable from the vast array of wood, stone and tonal effects available in the Polyflor portfolio. This variety of design can be

utilised to meet the needs of specialist care facilities, dementia led design and independent living. A blend of colours can be used with different light reflectance values to achieve the required contrast between the floor and wall, thereby conforming to the requirements of the Equality Act 2010.

Patient safety and comfort are also critical aspects of design where Polyflor can put forward suitable flooring solutions. Polysafe safety flooring is typically used to minimise slip potential in areas where spillages could be present, including kitchen areas, stair wells, en-suite bathrooms

and wet rooms. Polyflor Acoustix ranges also provide reduced impact sound between rooms, contributing to a more agreeable and peaceful living environment.



Alexandra Grange Care Home, UK



Housing Sector

Social housing, new builds & student accommodation

For all domestic accommodation, whether it's a new build or refurbishment project, Polyflor has the perfect flooring solution to suit any budget. Our selection of Luxury Vinyl Tiles and Sheets and our Polysafe ranges offer style and durability.

Where there is a requirement for impact sound insulation, for example in social housing or high rise buildings, floorcoverings from the Polyflor Acoustix collection are ideal. Our Acoustix ranges assist in reducing the intensity of sound and by dampening the noise levels, installation of these floors will help to improve the living conditions.

Polyflor at home

Create an elegant & stylish look with individual flooring collections

Suitable for any room at home, the Camaro and Colonia luxury vinyl tile flooring collections and the new Secura luxury vinyl sheet range combine the beauty of natural materials with a durable, low maintenance product that performs.



COLONIA™
FLOORING COLLECTION




Secura
luxury vinyl sheet flooring

Polyflor at home

Our dedicated website www.polyflorathome.com and social media offer exciting and interactive ways for customers to contact us and share ideas, designs and installations.

 www.facebook.com/PolyflorLtd

 twitter.com/PolyflorLtd

 blog.polyflorathome.com

 pinterest.com/polyflorathome



CAMARO™
FLOORING COLLECTION



A Stylish Workplace

Safe & Stylish Office Floors

Floors can affect the way you feel, and there are few places where this matters more than in the workplace. Morale and productivity are interconnected - Polyflor's excellent aesthetics and broad colour palette will help to transform any commercial environment.

Health & Safety Issues

Health and safety issues are increasingly important within the workplace, with slips, trips and falls a major cause of work-related injury. The Polyflor 'smooth' ranges provide excellent slip performance in dry conditions. In wet areas, such as toilets, changing rooms and kitchens, the Polysafe flooring ranges provide slip resistance which is assured for the guaranteed life of the product.



Public Sector

Government, military & community projects

Polyflor has been installed into many public sector projects throughout the world, including government buildings, prisons, community centres, museums and military installations.

Cost effective, durable and low maintenance, Polyflor has numerous options available in stunning designs. Polysafe for safety assurance through slip resistance and Polyflor Acoustix for reducing the intensity of sound waves generated within the structure of a building are commonly used in public sector buildings.



Specialist Applications

Floors to meet specialist requirements

Polyflor floorcoverings are ideally suited for specialist applications, such as cleanrooms in the pharmaceutical and electronics sectors. The Polyflor ESD family is often used in such applications for its electrostatic discharge protection.

By welding our sheet floorcoverings to create a continuous, impervious surface and utilising the Polyclad family of wall-claddings, a hygienic and sterile environment can be created.

The Institute of Reproductive Sciences, UK

What our customers are saying



"We've used an extensive range of Polyflor products at our previous care homes and are happy with the visual quality, maintenance, environmental and safety benefits they offer."

Jacqueline Ferguson, Design manager at Hallmark Care Homes



"We chose Polyflor flooring because of the attractive designs available, its low maintenance and durability benefits. Environmental issues were also important to the decision process and we were very impressed with Polyflor's credentials and the flooring's reduced environmental impact. The ranges are BRE A+ rated, which was an important factor as we are looking to achieve a BREEAM 'very good' status."

Gillian Hindle, Director of Business and HR for North Chadderton school, Oldham, UK



"It is vital that our hospital remains welcoming and comfortable for our visitors whilst also remaining safe and secure. We chose to specify Polysafe Modena PUR due to its high aesthetic appeal but also for its sustainable slip resistant properties and full HSE compliance. Modena does not look like a traditional safety floor but we were assured by the product's status as a Polysafe range. Being a very busy facility with lots of footfall, we need to ensure that our floor will stand up to a lot of traffic, provide underfoot safety whilst also being easy to clean."

David Garrett, Senior Project Manager at The Children's Hospital, Sheffield Central Clinic, UK



"The decision to use vinyl over the alternatives was based on the history of that product in the Australian healthcare market. We were looking for a single supplier of resilient flooring with a range broad enough to cover all the flooring requirements for the different areas in the hospital, including slip resistance, anti static, cushioning and AGV safe. Architecturally we were looking for a vinyl that wears well, resists scuffing and marking, and can be maintained to a high standard. We also wanted a colour with a natural warmth, steering away from colours traditionally used in health facilities. We have been pleased with how well it looks in the space. It has surpassed our expectations."

Geoff Cooke, BVN Architecture Associate (New \$721 million Royal North Shore Hospital, Sydney, Australia)

"We wanted to select a vinyl flooring with a really good lifecycle, that would be easily maintained and durable."

Raz Favotto, Thiess Construction (New \$721 million Royal North Shore Hospital, Sydney, Australia)



"We wanted flooring that is eco-friendly and has a natural look representing everything that our brand stands for. We chose Polyflor Forest fx because it had performed exceptionally well in our previous store and achieves the desired realistic timber appearance bringing a warmth and natural impression to our retail space."

Lance Turnbull, Global Business Development Manager for Bobux International Ltd., New Zealand



POLYFLOR™ INTERNATIONAL

Australia

Polyflor Australia
Tel: +61 3 9215 4400
Tel: 1800 777 425
E-mail: sales@polyflor.com.au

Canada

Polyflor Canada Inc.
Tel: +1 905 364 3000
E-mail: sales@polyflor.ca

China

Polyflor Hong Kong
Tel: +(852) 2865 0101
E-mail: anthonylam@polyflor.com.hk

France

James Halstead France SAS
Tel: +33 (0) 8 20 20 32 11
E-mail: info@jhfrance.fr

Germany

objectflor Art und Design Belags GmbH
Tel: +49 (0) 2236 966 330
E-mail: info@objectflor.de

Ireland

Polyflor Ireland
Tel: +353 (1) 864 9304
E-mail: salesireland@polyflor.com

New Zealand

Polyflor New Zealand
Tel: +64 9 269 1111
Tel: 0800 765 935
E-mail: sales@polyflor.co.nz

Norway

Polyflor Nordic
Tel: +47 23 00 84 00
E-mail: firmapost@polyflor.no

Poland

Polflor Sp. Z o.o.
Tel: +48 (0) 61 820 3155
E-mail: polyflor@polflor.com.pl

Russia

Polyflor Contract Ltd
Tel: +7 (812) 332 42 02
E-mail: info@polyflor.ru

South Africa

Poly Sales Africa (Pty.) Ltd
Tel: +27 11 609 3500
E-mail: info@polyflor.co.za

Sweden

FalckDesign AB
Tel: +46 (0) 300 15820
E-mail: info@falckdesign.com

United Arab Emirates

Polyflor Middle East
Tel: +971 4 349 1078
E-mail: espm@eim.ae

www.polyflor.com



POLYFLOR™ HEAD OFFICE

POLYFLOR LTD. PO BOX 3 RADCLIFFE NEW ROAD WHITEFIELD MANCHESTER M45 7NR UK

UK SALES DIRECT: +44 (0)161 767 1122

UK SAMPLE REQUESTS: +44 (0)161 767 2551

EXPORT SALES DIRECT: +44 (0)161 767 1913

UK FAX:

+44 (0)161 767 1128

EXPORT FAX:

+44 (0)161 767 1166

TECHNICAL SUPPORT: +44 (0)161 767 1912

RECEPTION: +44 (0)161 767 1111

E-MAIL: INFO@POLYFLOR.COM

WEBSITE: WWW.POLYFLOR.COM