



Harmony *fx*[™]

TECHNICAL VINYL FLOORING
U3/U4 Acoustic/Compact



INTRODUCTION

Expertly combining aesthetics with performance, the **Harmony fx** ranges robust formulation meets the demands of today's commercial interiors whilst being flexible enough to meet modern design schemes.

The contemporary and creative designs together with superior acoustic performance, achieving **19dB impact sound reduction**, makes this collection ideal for education, healthcare, office, retail and leisure sectors, all developed and presented in a practical, resilient and hygienic product construction.

Encapsulating Polyflor's best selling Forest and Mineral collections and introducing newer contemporary abstract patterns, Harmony fx offers a complete solution for those looking for stylish designs without having to compromise on durability.

To further enhance the floorcovering, Harmony fx features a high quality, cross-linked polyurethane reinforcement (PUR) providing a low cost, polish-free maintenance regime for the lifetime of the product.

The Harmony fx range is 100% recyclable and achieves **NF UPEC** and Acoustix Harmony fx **NF UPEC A+ certification**. All these qualities make the collection environmentally preferable whilst meeting decorative, practical, budgetary and maintenance objectives.

For more details on these or any other Polyflor products visit www.polyflor.com.



100%
RECYCLABLE



CONTENTS

04	Importance of Acoustics
08	Harmony fx Collections
28	Technical Details
30	Market Sectors & Information

INTRODUCTION TO ACOUSTICS

It is increasingly understood that noise can have an extremely detrimental effect in healthcare settings, in schools, workplaces and public spaces, which can significantly affect an individual's well-being and also hinder respective recuperation, teaching, learning, working and comfort.

The Harmonyfx range of vinyl floorcoverings have been designed and developed to assist in improving the acoustic properties within commercial and public locations as well as providing the additional benefits of aesthetics, performance, hygiene and durability.

General points to consider

Planning and room layout can be used to avoid impact noise sources on floors above noise-sensitive rooms. In addition to Polyflor's acoustic floorcoverings, floating floor constructions and independent ceilings can be effective means of isolation.

Other sources of noise to consider when planning your interior are:

- Traffic
- Weather
- Plumbing
- Ductborne noise
- Noise via open windows

Acoustic flooring such as Harmony fx is only part of the action that can be taken to reduce noise levels. Acoustic ceiling and wall panels, fabrics, textiles and plants may also be considered early in the design process to ensure compatibility.

Smooth acoustic floorcoverings are designed to reduce impact sound at source, not to reduce background or reverberation sound within a room.

It is advisable from the outset of a project to seek advice from a specialist acoustician as the subject requires considerable expertise.



SOUND AND THE NATURE OF SOUND

Sound is usually generated by the vibrations of a surface, which increases the pressure fluctuations in the air or some other medium. Sound is transmitted through sound waves and may be described in terms of sound pressure, sound energy or sound power. Noise is generally defined as unwanted sound.

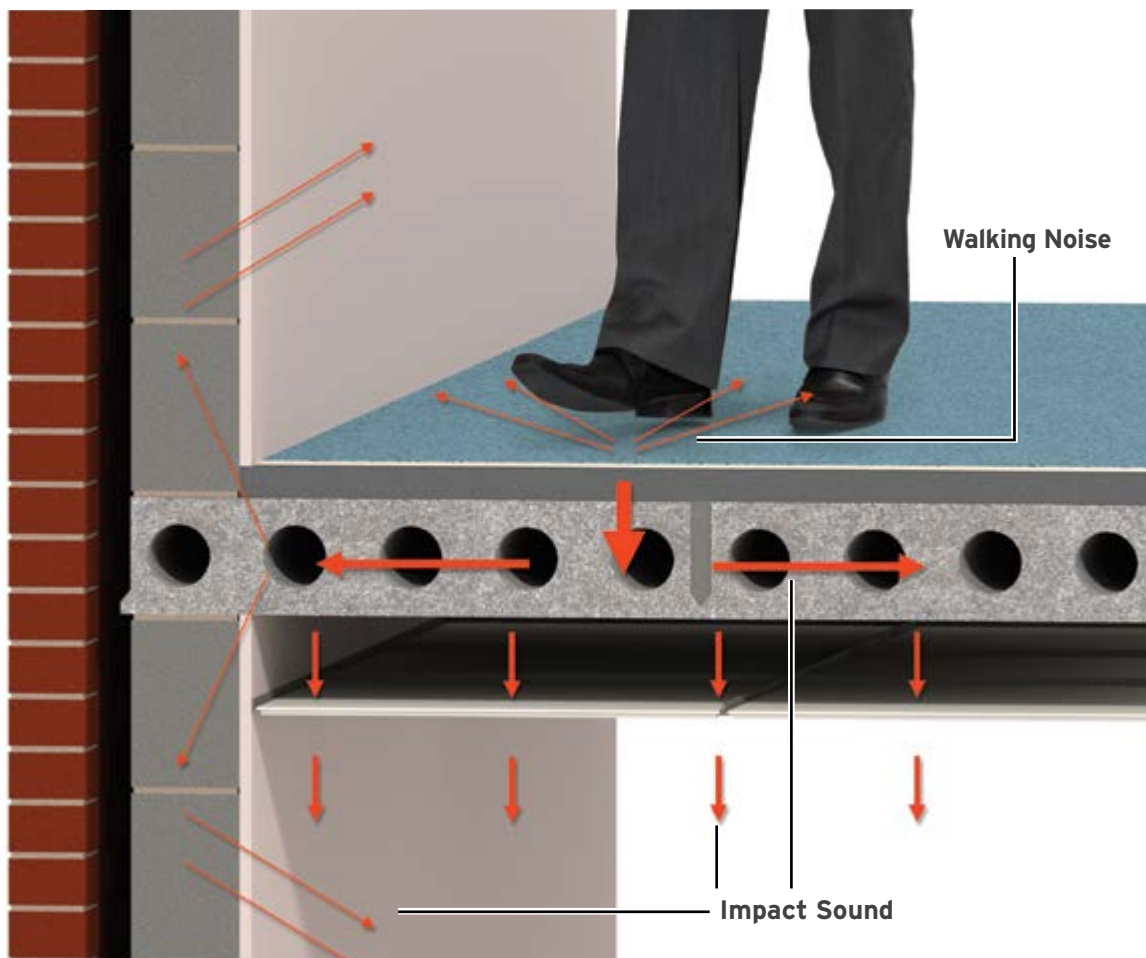
Impact Sound

Noise is created when sound energy is transmitted either by impact or by air. Impact sound is energy produced by the collision of solid objects transmitted through the structure of a building such as **footsteps**, **slamming of doors** or **dragging of furniture**.

Noise levels transmitted through floors by impact sound can be reduced by acoustic planning at the outset of a project and by correctly installing a Polyflor acoustic floorcovering.

Walking Noise

Walking Noise unlike Impact Sound is where the sound of a person's footstep when walking in a room is reverberated back into the room through the air. Walking Noise is regulated as part of NF UPEC A+ requirements, and is an important factor to consider when trying to reduce sound levels.



ACOUSTIC TESTING

The Impact Test

The impact test measures the sound level downstairs when a standard tapping machine is operating upstairs. This is intended to replicate noise such as footsteps and the moving of furniture which travels through the separating floor. The result is shown as the weighted standardised Impact Sound Pressure Level, or L'nT,w and the lower the sound pressure level downstairs the better the insulation.

Impact sound insulation is measured in terms of an absolute sound level so that a lowered measured value downstairs indicates that the standard of impact sound insulation is better. Sound levels and sound insulation values are expressed in decibels (dB).

Excellence as Standard

NF UPEC French certification aims to provide building owners and specifiers with a safe and simple way of choosing a floor depending on its quality and how it handles traffic where it will be installed. The advantages of a flooring solution having NF UPEC certification are:

- Quality and suitability are guaranteed
- Production that is continuously monitored to ensure consistent quality by a certified manufacturer
- Independent third-party validation of the manufacturers compliance with the certified characteristics and a quality assurance system

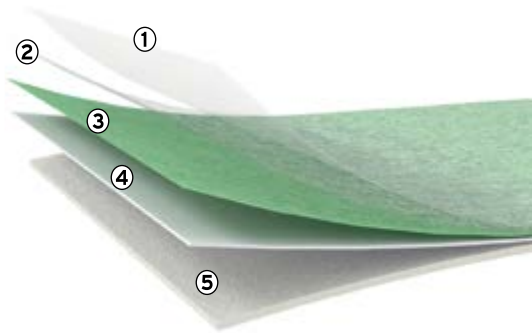
The Harmony fx range of flooring has been awarded NF UPEC and Acoustix Harmony fx NF UPEC A+ certification, and achieves an **impact sound reduction level of at least 19dB**.

Harmony^{fx} Range

The Harmony fx product range has been designed as an all encompassing flooring solution for a wide variety of commercial interiors. By including an assortment of different textures, patterns, colours and technical specifications, each of the **6 Harmony fx collections** offers a multitude of flooring combinations, allowing them to be tailored to the interiors specific requirements.

Compact

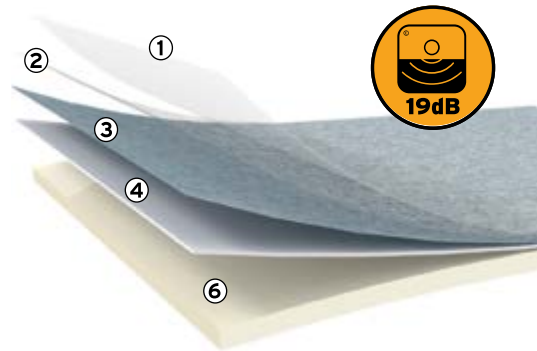
Compact heterogeneous flooring lends itself perfectly to the demands of modern commercial interiors. The polyurethane reinforcement (PUR) allows for a polish-free maintenance regime for the lifetime of the product, making this a durable and attractive flooring solution.



Spec: U4 2mm gauge, 0.7mm wear layer

Acoustic

Incorporating all of the benefits found in compact vinyl flooring, the acoustic specification has an additional foam layer on the underside of the product. This provides an impact sound reduction of at least 19dB, as well as giving the floor a warm, soft feeling underfoot.



Spec: U4 3.7mm gauge, 0.65mm wear layer
U3 3.7mm gauge, 0.5mm wear layer



PRODUCT LAYERS

1. Polyurethane Surface Treatment - Developed to minimise the time and costs involved in regular maintenance
2. Wear Layer - This transparent layer is very hard-wearing and protects the flooring decoration
3. Decorative Layer - Harmony fx wide range of collections help to create stylish interiors with high visual impact
4. Stabilisation Layer - Improved dimensional stability is achieved by minimising the effect of surrounding physical properties (e.g. temperature fluctuations)
5. Load-Bearing Layer - The basis for the long service life and high performance of Harmony fx
6. Acoustic Layer - Creating a flooring solution that is warm and soft underfoot, and achieves an impact sound reduction of at least 19dB





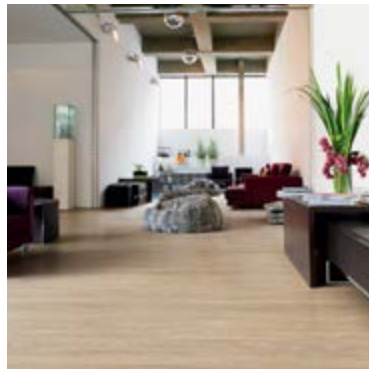
Forest Collection

The natural environment is the primary inspiration for the Forest collection, incorporating sophisticated and highly realistic designs.

With a varied tonal palette of 8 designs, including popular Oak, Beech and Walnut effects, this collection has excellent durability and is highly suited to high traffic commercial interiors. Targeted primarily at the education, healthcare, retail, leisure and office sectors, the outstanding appearance and performance characteristics are as appealing to the broad commercial market.



100%
RECYCLABLE





Warm Beech

Acoustic: 3295/3(U3) 3295/4(U4)

Compact: 3290(U4)

WR 3290 w/l: 100 x 500mm



American Oak

Acoustic: 3385/3(U3) 3385/4(U4)

Compact: 3380(U4)

WR 3380 w/l: 100 x 1000mm



Rustic Oak

Acoustic: 3335/3(U3) 3335/4(U4)

Compact: 3330(U4)

WR 3330 w/l: 84 x 332/664mm



European Oak

Acoustic: 3345/3(U3) 3345/4(U4)

Compact: 3340(U4)

WR 3340 w/l: 100 x 1000mm



Oiled Oak

Acoustic: 3095/3(U3) 3095/4(U4)

Compact: 2990(U4)

WR 2990 w/l: 167 x 1500mm



Classic Oak

Acoustic: 3125/3(U3) 3125/4(U4)

Compact: 3100(U4)

WR 3330 w/l: 167 x 1500mm



Smoked Oak

Acoustic: 3155/3(U3) 3155/4(U4)

Compact: 3150(U4)

WR 3150 w/l: 167 x 1500mm



Classic Walnut

Acoustic: 3235/3(U3) 3235/4(U4)

Compact: 3230(U4)

WR 3230 w/l: 167 x 1000mm



WR - Recommended weld rod

w/l - Plank width/length

Wide plank design







Mineral Collection

The Mineral fx (compact) and Acoustix Gallery fx (acoustic) collections have been developed to meet a growing demand for aesthetic flooring within residential and commercial interiors. The collections incorporates clean natural stone effects and mottled granite designs in 9 stimulating colourways. The earthy and fiery tones of natural rock, the subtlety and freshness of water and the greenery of our surrounding environment were the direct inspirations for the collections.

As with other Harmony fx collections, Mineral fx and Acoustix Gallery fx are targeted at the education, healthcare and general commercial markets although the acoustic performance combined with the contemporary overall designs make it ideal for offices and public interiors.



100%
RECYCLABLE





Silica Sand

Acoustic: 6843/3(U3) 6843/4(U4)

Compact: 9800(U4)

WR 9800



Mica Sand

Acoustic: 6844/3(U3) 6844/4(U4)

Compact: 9801(U4)

WR 9801



Earth

Acoustic: 6845/3(U3) 6845/4(U4)

Compact: 9802(U4)

WR 9802



Mercury

Acoustic: 6840/3(U3) 6840/4(U4)

Compact: 9803(U4)

WR 9803



Zinc

Acoustic: 6841/3(U3) 6841/4(U4)

Compact: 9804(U4)

WR 9804

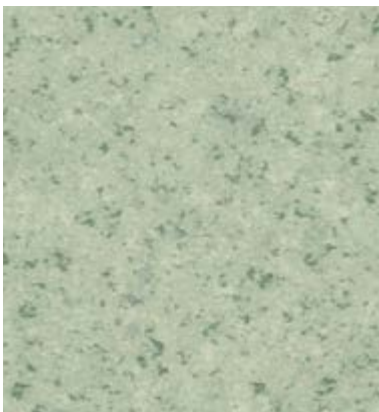


Onyx

Acoustic: 6842/3(U3) 6842/4(U4)

Compact: 9805(U4)

WR 9805

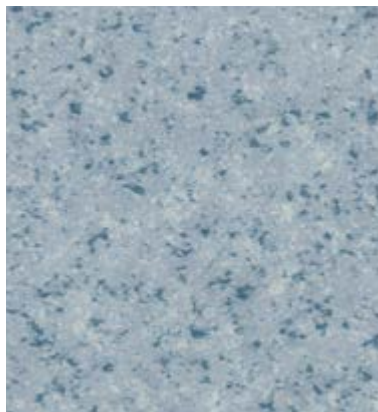


Euclase Green

Acoustic: 6846/3(U3) 6846/4(U4)

Compact: 9809(U4)

WR 9809



Celestine Blue

Acoustic: 6847/3(U3) 6847/4(U4)

Compact: 9806(U4)

WR 9806



Lazulite Blue

Acoustic: 6848/3(U3) 6848/4(U4)

Compact: 9808(U4)

WR 9808



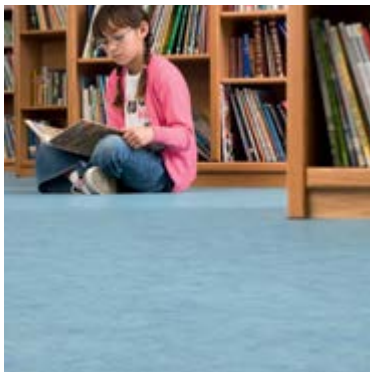




Unibella Collection

Unibella is a delicately designed floorcovering that combines textured swirls and veins of varying tones to create an overall decoration. This attractive pattern creates a complex and elegant floorcovering that is both stylish and fresh, and the variety of subtle neutral tones and stronger accent colours offers an infinite combination to suit any commercial environment from fashionable high-design settings to classically styled interiors.

The variety of bright, primary colours available make the Unibella collection ideal for educational settings, or areas where young children are present such as crèches, hospitals and nurseries, where safety, hygiene and aesthetics are key requirements.



**Sable***Acoustic:* 6311/3(U3) 6311/4(U4)*Compact:* 6411(U4)

WR 5090

**Beige***Acoustic:* 6316/3(U3) 6316/4(U4)*Compact:* 6416(U4)

WR 6316

**Tonnerre***Acoustic:* 6315/3(U3) 6315/4(U4)*Compact:* 6415(U4)

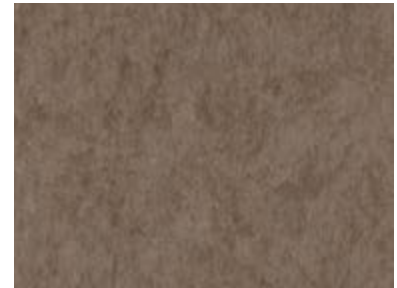
WR 6315

**Argile***Acoustic:* 6319/3(U3) 6319/4(U4)*Compact:* 6419(U4)

WR 6319

**Etain***Acoustic:* 6320/3(U3) 6320/4(U4)*Compact:* 6420(U4)

WR 6320

**Taupe***Acoustic:* 6321/3(U3) 6321/4(U4)*Compact:* 6421(U4)

WR 6321

**Soleil***Acoustic:* 6317/3(U3) 6317/4(U4)

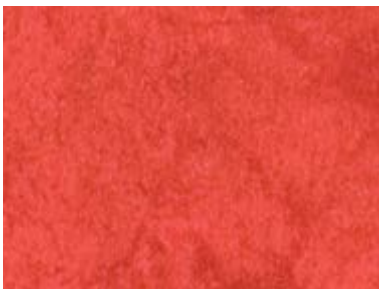
WR 6317

**Aqua***Acoustic:* 6314/3(U3) 6314/4(U4)*Compact:* 6414(U4)

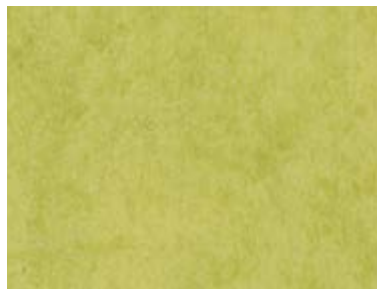
WR 6314

**Marine***Acoustic:* 6313/3(U3) 6313/4(U4)

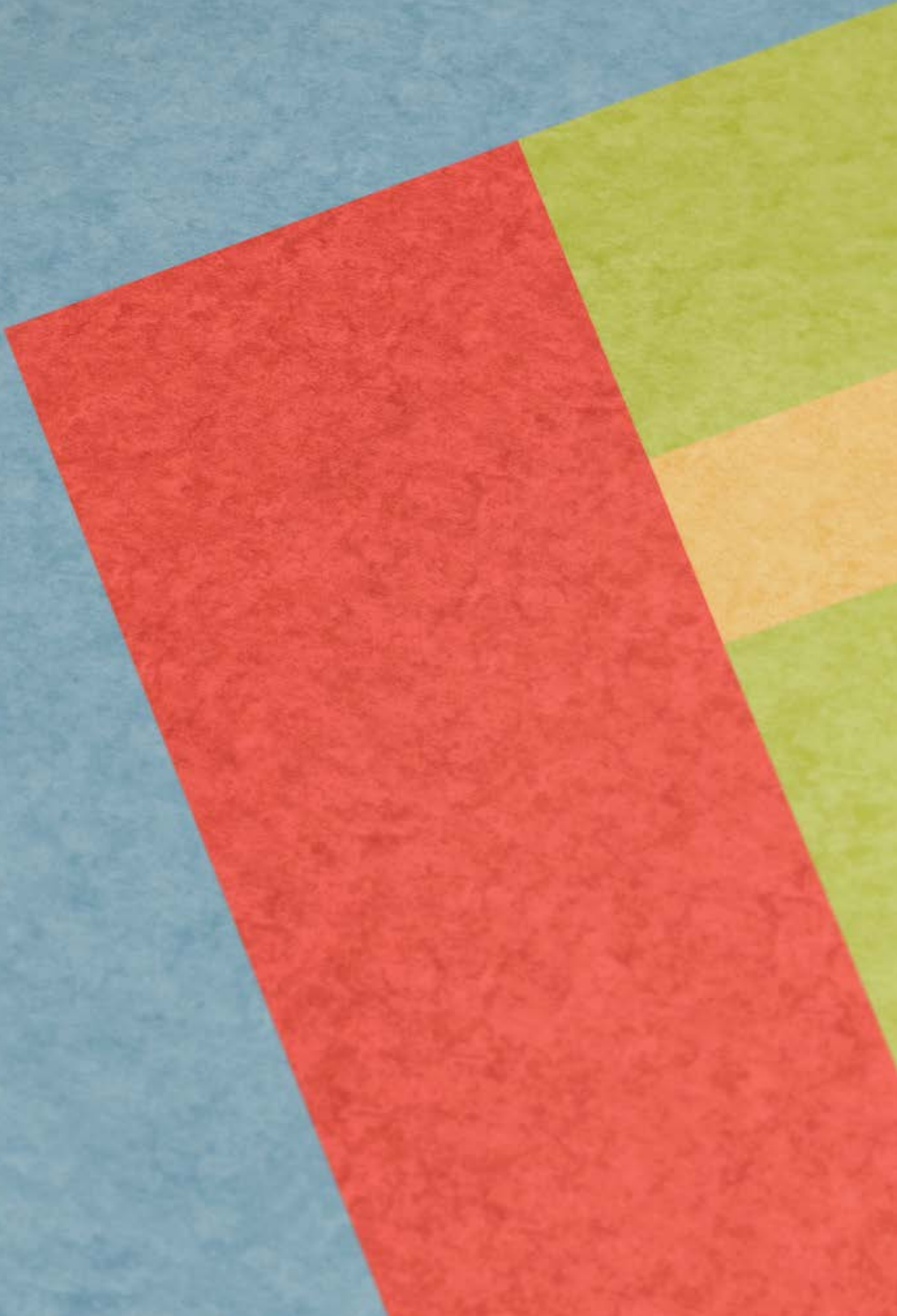
WR 6313

**Cerise***Acoustic:* 6318/3(U3) 6318/4(U4)

WR 6318

**Citron Vert***Acoustic:* 6312/3(U3) 6312/4(U4)

WR 6312







Tissé Collection

For spaces that require a more organic look the Tissé collection of floorcoverings has the appearance and texture of woven fabric. The current trend for hardwearing natural fibres and basket weave styled flooring does not translate to commercial areas when hygiene, maintenance and slip resistance are crucial factors.

With the Tissé collection, commercial settings can achieve the look they require without having to compromise on safety and cleanliness, and the natural colour pallet allows it to blend seamlessly into any style of interior.



**100%
RECYCLABLE**



Laine

Acoustic: 6301/3(U3) 6301/4(U4)
WR 5081



Jacinthe

Acoustic: 6302/3(U3) 6302/4(U4)
WR 5083



Graphite

Acoustic: 6303/3(U3) 6303/4(U4)
WR 6303



Urbain Collection

Urbain is a contemporary floorcovering designed to evoke a fashionable, modern style in a durable, practical format, with all the features and benefits you would expect from a Polyflor floorcovering.

Offering either a fresh neutral base for fixtures and furnishings to stand out on, or an inventive focal point for waiting areas, product displays or meeting rooms, the cool grey tones combined with outstanding acoustic performance makes Urbain a realistic yet convenient alternative to real concrete.



**100%
RECYCLABLE**



Ciment

Acoustic: 6325/3(U3) 6325/4(U4)
WR 6325



Béton

Acoustic: 6326/3(U3) 6326/4(U4)
Compact: 6426(U4)
WR 6326







Linéa Collection

The subtle yet striking appearance of the Linéa collection is designed to complement an array of interior styles whilst remaining modern and eye-catching. The layers of different tones and linear markings give the floorcovering texture and depth, whilst providing a smooth overall finish that is the perfect backdrop to any decoration or furnishings.

For a clean, crisp look that is right up to date, the paler Fauve and Ivoire shades can be combined with Crépuscule to create a stunning contrast, whilst the linear pattern can be utilised to give the installation directionality or guide people to certain areas.



**100%
RECYCLABLE**

Below: Linéa collection, Fauve 6323



**Ivoire**

Acoustic: 6324/3(U3) 6324/4(U4)
WR 5084

**Fauve**

Acoustic: 6323/3(U3) 6323/4(U4)
WR 6323

**Crépuscule**

Acoustic: 6322/3(U3) 6322/4(U4)
WR 5086



TECHNICAL FEATURES

Environment

Polyflor have demonstrated a high level of commitment over the years to producing high quality floorcovering, whilst minimising our impact on the environment without compromising the performance benefits of our products. Harmony fx achieves a BRE Global Environmental A+ rating (Certificate No. ENP 415) in major use areas such as education and healthcare. An EN 15804 Environmental Product Declaration is also available.

There can be few materials better suited to recycling than vinyl flooring. The Harmony fx range is 100% recyclable, and can be recycled without losing any of its performance properties. Polyflor continually works on developing new products and technologies, and constantly evaluates production methods to further minimise our impact on the environment.

Maintenance & Hygiene

The incorporation of a polyurethane reinforcement into the Harmony fx range helps protect the floorcovering by resisting soiling and scuffing. Combined with the superior closed surface finish, this enhanced protection allows the use of a polish-free maintenance regime for the lifetime of the flooring.

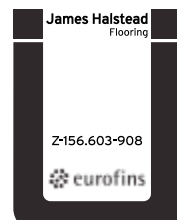
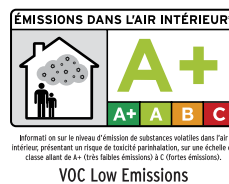
This leads to an overall maintenance cost saving of 48% over a 20 plus year life, and fewer cleaning chemicals and reduced power requirements mean reduced environmental impact.

Health & Safety

Indoor air quality is, quite rightly, a key environmental consideration when selecting building products. According to the French Regulation (decret DEVL 1101903D) and (arete DEVL 1104875A) the emission of VOC (Volatile Organic Compounds) from Harmony fx corresponds to the emission class A+, the highest classification achievable. The Harmony fx product range also does not contain Benzene, DEHP, BBP and DIBP and are fully REACH compliant.

When tested using the AgBB method, VOC emissions are below quantifiable levels, and the collection has also attained Eurofins Indoor Air Comfort Gold status, MI and FloorScore certification.

Health and Safety is also a factor when selecting the right floorcovering for any installation. The Harmony fx range is certified to R10 (DIN 51130) and EN 13893 Class DS. If safety flooring with sustainable wet slip resistance is required Polyflor also offers Polysafe safety flooring.



Emissionsgeprüfter Bodenbelag nach DIBt Grundsätzen

FIT FOR PURPOSE

Within the majority of commercial interiors, a requirement for different specifications of floorcovering that blends seamlessly together and does not compromise on aesthetics is common place. Polyflor's extensive product portfolio can provide a tailored flooring solution for any commercial installation that ensures all relevant safety, maintenance and hygiene specifications are met, and all in one place.

Covering all back and front-of house areas including reception and waiting rooms, kitchens, toilets, offices and corridors, Polyflor's range comprises over **500 different designs and shades*** to choose from, helping to create an interior as unique as you are. In some large scale commercial interiors where one area has dual-purposes, the use of different types of floorcovering within the same area can also help outline each zone and guide users.

For interiors where slip resistance is vital but only in certain zones, for example a hospital canteen, combining Polysafe slip resistant flooring in the food serving area with Harmony fx wood effect in the dining area can help distinguish each of these zones, ensure Health & Safety is adhered to, and create a welcoming dining room for staff, patients and visitors to relax in.



Clockwise from right: Acoustix Forest fx and Polysafe, SimpLay, Acoustix Forest fx and Polysafe

SECTORS AND MARKETS



Schools & Education

The learning environment is forever evolving. The creation of pleasant and comfortable surroundings is bringing a new focus to school design and build.

Acoustic flooring can be a necessary part of a school building specification from the outset, as good acoustic conditions in teaching areas can have a profound impact on pupils learning and staff performance.

Creating an appealing educational setting is central to engaging pupils and inspires learning and creativity. Using brighter collections like those in the Unibella collection can help create stimulating environments, and the Harmony fx range achieves VOC emissions below quantifiable levels for exceptional indoor air quality.



Healthcare & Aged Care

21st century healthcare design is about achieving a relaxed, professional environment for patients, staff and visitors. The choice of floorcovering can have a major impact on the feel and performance of a hospital or aged care interior, where criteria such as hygiene, maintenance, acoustics, durability, slip resistance and aesthetics are all vitally important.

Harmony fx has the qualities necessary to tackle these vital considerations, including antimicrobial agents to help inhibit growth of MRSA on the floor. Plus the realistic wood designs specifically within the Forest collection can create a warm friendly atmosphere to put patients at ease and aid in their comfort and recovery.



Retail & Leisure

Modern retail and leisure facilities, whether they are contemporary or classically themed, face the challenge of balancing functionality with style in a bid to create welcoming and inspiring public spaces. Retailers and leisure complexes commonly use flooring as part of their brand identity, which then forms a template for all future outlets. Therefore finding a flooring solution that is flexible in design and colours, and conforms to essential health and safety regulations becomes critical.

The mix of designs within the Harmony fx range provide the ideal backdrop for any décor, whilst the R10 finish provides essential slip resistance crucial in high footfall areas.



Office Buildings

Ideal for office environments where calming, non-evasive surroundings can be beneficial. The neutral palette and subtle colour tones of the Tissé and Mineral collections have been developed to suit a range of commercial interiors. Taking inspiration from natural textures, colours and materials, Harmony fx creates a serene atmosphere where ideas, opinions, interaction and encouragement can flourish.

All of the Harmony fx floorcoverings also feature a polyurethane reinforcement (PUR) to ensure a low-cost, polish-free maintenance regime for the lifetime of the product.

WELCOME TO POLYFLOR

Founded in 1915, James Halstead plc, the parent company of Polyflor Ltd., was originally a textile company based in northern England until the 1950s, when it pioneered the development of homogeneous vinyl floorcoverings.

Over fifty years later the company continues to go from strength to strength as a global organisation with significant international market share and listed on the London Stock Market with a nine figure turnover. This success is largely attributed to the depth of our customer focus and continuous improvement. This has been important regarding the expansion of the Polyflor portfolio with the vast selection of Polyflor vinyl floorcoverings, as well as minimising our environmental impact.

Commitment to Quality

A quality-driven organisation, the manufacturing processes and systems at Polyflor are ISO 9001 certificated. We test our products to a wide range of international standards, including slip resistance tests and VOC emissions tests, to back-up their performance. The Harmony fx range achieves NF UPEC and Acoustix Harmony fx NF UPEC A+ certification.

Customer Support

Polyflor has dedicated and experienced personnel within its sales, marketing, technical and design departments, to provide comprehensive support to our customers. To ensure excellent product availability, Polyflor has developed strong relationships with its extensive network of distribution partners throughout the world. Our website provides an easy to use reference point for product specifications, technical data, colours and samples.





Environmental Performance

Minimising the environmental impact of our products and operations is highly important to Polyflor. We achieve ISO 14001, which means our facilities, practices and objectives for improvement and development are regularly monitored by external auditors. Polyflor is constantly looking for ways to reduce its carbon footprint by improving waste management, recycling, energy consumption, transportation as well as low maintenance features of our products.

Made in EU

Polyflor is proud to be supporting local businesses and communities through continued investment and expansion into new territories. Operating through subsidiary offices and agents across Europe, including the newest addition James Halstead France, Polyflor's warehousing and distribution facilities continue to grow. All of Polyflor's heterogeneous sheet products are manufactured within the EU using responsibly sourced raw materials.

Clockwise from right: Polyflor warehousing, Germany, Polyflor Manchester UK site, James Halstead France site, Polyflor trucks at Oldham UK site



INSTALLATION

For full details on the installation of Harmony fx, including recommended adhesives, refer to one of the following contact points:

- Technical section of the website www.polyflor.com
- Telephone the Customer Technical Support Team on **+44 (0) 161 767 1111**
- Email the Customer Technical Support Team at tech@polyflor.com

Maintenance

Appearance, hygiene and cleanliness are key points to consider when establishing a maintenance programme. Poor maintenance can damage aesthetics, impair performance, shorten floor life and create hygiene problems in critical areas. In recognition of this Polyflor provides low maintenance options right across our product portfolio enabling the cleaning process to be as cost-effective and straightforward as possible.

The incorporation of a polyurethane reinforcement into the Polyflor Harmony fx range helps protect the floorcoverings by resisting soiling and scuffing. Combined with the superior closed surface finish, this enhanced protection allows the use of a polish-free maintenance regime for the lifetime of the flooring. Fewer cleaning chemicals and greatly reduced power requirements mean reduced environmental impact.

Website

To view the Harmony fx range online or to learn more about installation and maintenance, visit www.polyflor.com and follow the links to the Harmony fx product page. Here you will find product details, additional technical data and the option to order samples.



TECHNICAL

Description	Standards	Unit	Acoustic EN 651		Compact EN 10582
			33	43	43
Gauge	EN 428 /EN ISO 24346	mm	3.7	3.7	2
Wear layer	EN 429 /EN ISO 24340	mm	0.5	0.65	0.7
Total Weight	EN 430/ EN ISO 23997	g/m ²	2390	2550	2660
Roll width	EN 426/ EN ISO 24341	cm	200	200	200
Roll length	EN 426/ EN ISO 24341	m	20	20	20

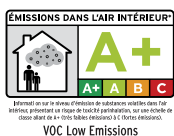
Classification

Performance classification	EN 685/ EN ISO 10874		23, 33, 42	23, 34, 42	23, 34, 43
NF UPEC/UPEC A+ Classification	NF 189		U3P3E2C2	U4P3E2C2	U4P3E2C2
NF UPEC A+ Classification	NF 189		782/352-002.1 782/352-002.1 bis	782/352-001.1 782/352-001.1 bis	- -
NF UPEC Classification	NF 189		- - - -	- - - -	782/352-003.1 782/352-004.1 782/352-005.1 782/352-006.1
Acoustic impact sound reduction	EN ISO 10140-3 (EN ISO 140-8)	dB	19	19	-
In-room impact noise	NFS 31074	dB	< 65	< 65	-
Reaction to fire	EN 13501-1 ASTM E648		Bfl-S1 Class 1	Bfl-S1 Class 1	Bfl-S1 Class 1
Electrical behaviour	EN 1815	kV	< 2	< 2	< 2

Performance

Residual indentation	EN 433/ EN ISO 24343-1	mm	< 0.2	< 0.2	< 0.1
Abrasion resistance	EN 651 EN ISO 10582	Group Type	T -	T -	T I
Dimensional stability	EN 434/ EN ISO 23999	%	< 0.40	< 0.40	< 0.40
Slip resistance	EN 13893 DIN 51130	Class	DS (Dry condition) R10	DS (Dry condition) R10	DS (Dry condition) R10
Chemical resistance	EN 423 (ASTM F 1301-99)		Excellent	Excellent	Excellent
Colour fastness to artificial light	ISO 105-B02 Method 3	Level	≥ 6	≥ 6	≥ 6
Castor chair suitability	EN 425/ ISO 4918		Suitable	Suitable	Suitable
Underfloor heating			Suitable max. 27°C	Suitable max. 27°C	Suitable max. 27°C
Surface reinforcement			PUR	PUR	PUR

Hygiene These products have been independently tested and results demonstrate that they inhibit the growth of MRSA on the flooring. An effective cleaning regime is however, the most important defence against infection.



FalckDesign AB
Energigatan 9, SE-434 23 Kungsbacka,
Sweden
Tel: +46 (0) 300 15820
E-mail: info@falckdesign.com

objectflor Art und Design Belags GmbH
Wankelstraße 50, 50996 Köln, Germany
Tel: +49 (0) 2236 966 330
E-mail: info@objectflor.de

Polyflor Australia
59-65 Wedgewood Road, Hallam,
Vic 3803, Australia
Tel: 1800 777 425
E-mail: sales@polyflor.com.au

Polyflor New Zealand
100 Plunket Ave, Manukau 2104
New Zealand
PH: 0800 765 935
E-mail: sales@polyflor.co.nz

Polyflor Canada Inc.
3190 Caravelle Dr. Mississauga
Ontario, Canada L4V 1K9
Tel: 1 905 364 3000
E-mail: sales@polyflor.ca

Polyflor Contract Ltd
Office 19,
Konstantina Zaslouva Street. Dom. 4
St.Petersburg, 191119 Russia.
Tel: +7 812 332 42 02
E-mail: info@polyflor.ru

Polyflor Hong Kong
Room 2409, 24th Floor,
New York Life Tower, Windsor House,
311 Gloucester Road,
Causeway Bay, Hong Kong
Tel: +852 2865 0101
E-mail: anthonylam@polyflor.com.hk

Polyflor Ireland
Unit 106, Millennium Trade Park,
Ballycoolin, Blanchardstown, Dublin 11
Tel: +353 (1) 864 9304
E-mail: salesireland@polyflor.com

Polyflor Middle East
PO Box 71862, Dubai, UAE
Tel: +971 4 349 1078
E-mail: espm@eim.ae

Polyflor Nordic
Kjelsåsveien 168 B, N-0884 Oslo, Norway
Tel: +47 23 00 84 00
E-mail: firmapost@polyflor.no

Polyflor SP. Z O.O.
ul. Smolna 13 A / U3, 61-008 Poznań,
Poland
Tel: +48 61 820 3155
E-mail: polyflor@polflor.com.pl

Poly Sales Africa (Pty.) Ltd
PO Box 3967, Edenvale 1610,
South Africa
Tel: (27) 11 609-3500
E-mail: info@polyflor.co.za

James Halstead France SAS
Parc Saint Christophe 10 Avenue de
l'Entreprise
95861 Cergy Pontoise
Tel: 08.20.20.32.11
info@jhfrance.fr

**POLYFLOR**TM
COVERING THE WORLD



Made in EU

*James Halstead*TM
FLOORING
LIT244 JULY/13