

# PROJECT BRIEF

## PROJECT BRIEF

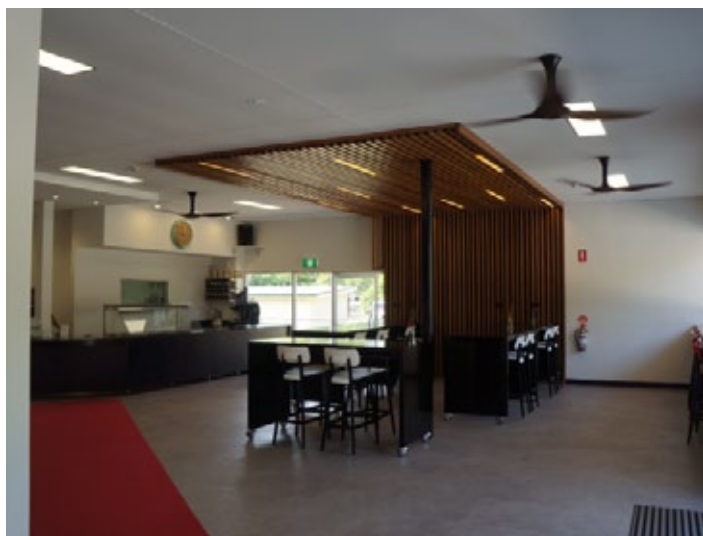
PROJECT: UQ Café Gatton  
LOCATION: Gatton QLD  
ARCHITECT /DESIGNER: Clements Clarke Architects  
INSTALLER: Andersens – Stafford QLD  
PRODUCTS: Expona Design – Dark Grey Concrete 7238



Clements Clarke Architects was engaged by UQ to provide a renovation solution to the existing Café at the Gatton Campus, providing a rejuvenated facility with increased seating capacity. By definition a campus café will be subject to significant foot traffic and as a result a reliable and hardwearing solution was required. Nick Clarke of Clements Clarke Architects said “we initially looked to work with the existing slab, however it’s quality was subpar, thus our choice to look for options”.

“Enter Polyflor, their range of textures and colours provided a solution both practically and aesthetically. The selection of the cool concrete was made to mimic the slab look and feel we wanted”

“The clients and users have had nothing but positive comments on the rejuvenated space and a lot of that praise is for the clean look and feel of the flooring”.



[www.polyflor.com.au](http://www.polyflor.com.au) 1800 777 425 [sales@polyflor.com.au](mailto:sales@polyflor.com.au)