

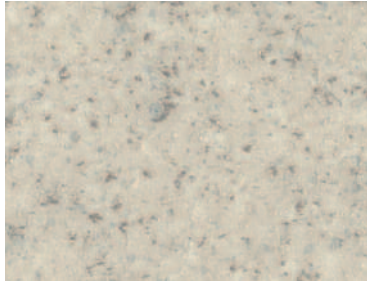


POLYFLOR

POLYSAFE™ MODENA PUR

NEW

Decorative heavy-duty safety flooring

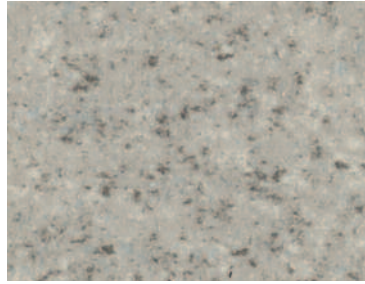


Grey Fluorite 4042

w/r 9803

LRV 47.5

NCS S 2002-Y50R



Agate Grey 4043

w/r 9804

LRV 38.3

NCS S 3500-N

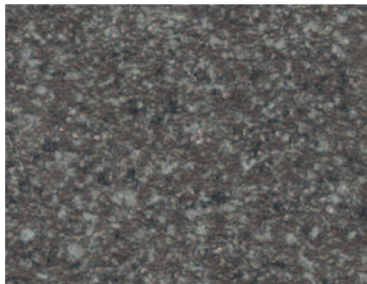


Gypsum 4044

w/r 9800

LRV 49.5

NCS S 2005-Y30R

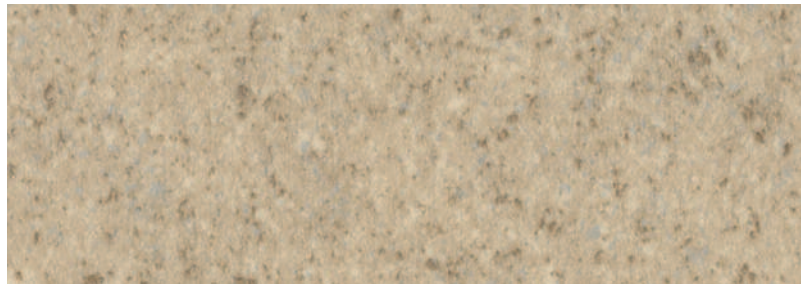


Jetstone 4045

w/r 9805

LRV 14.7

NCS S 7502-R

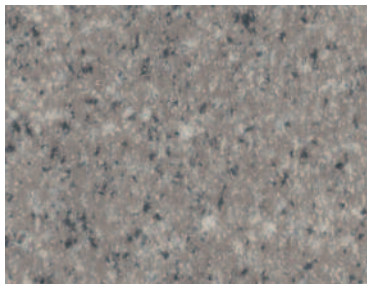


Copal 4046

w/r 9801

LRV 39.4

NCS S 3010-Y20R

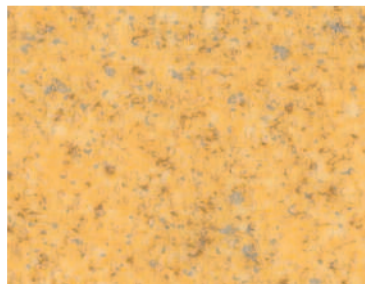


Galena 4047

w/r 9807

LRV 27.2

NCS S 4502-R

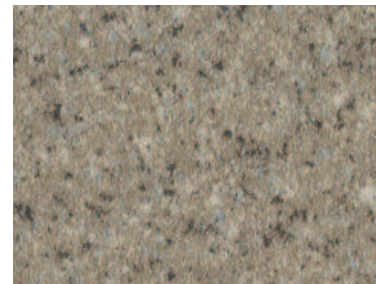


Citrina 4048

w/r 9811

LRV 44.4

NCS S 2040-Y10R

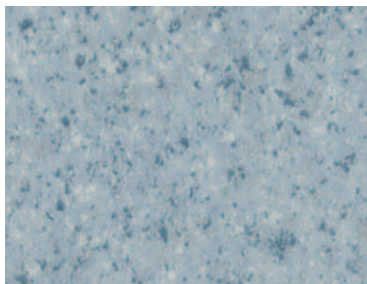


Andesite 4049

w/r 9802

LRV 26.4

NCS S 4005-Y50R

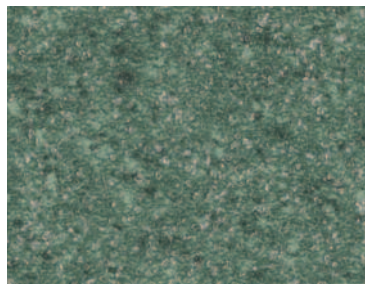


Angelite 4051

w/r 9806

LRV 40.0

NCS S 3010-R90B

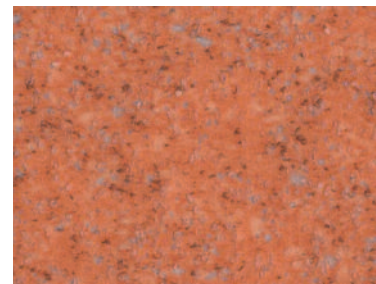


Green Tourmaline 4052

w/r 9810

LRV 17.3

NCS S 6010-G10Y

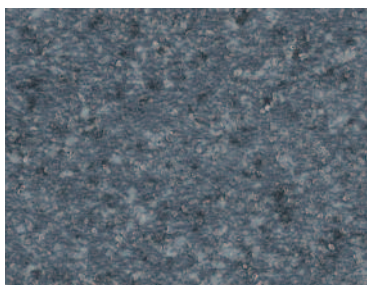


Orange Calcite 4053

w/r 9812

LRV 23.8

NCS S 3040-Y60R

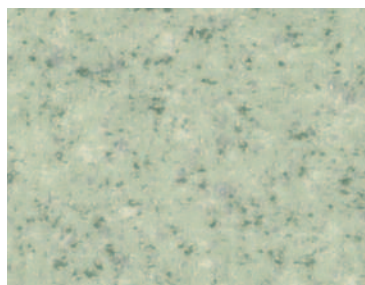


Blue Quartz 4054

w/r 9808

LRV 16.9

NCS S 6010-R90B

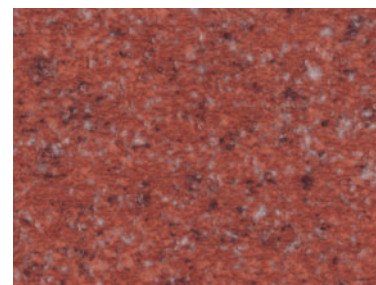


Aventurine 4055

w/r 9809

LRV 44.9

NCS S 3010-G50Y

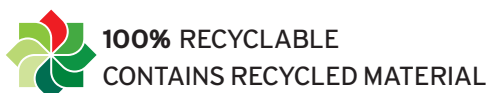


Garnet 4056

w/r 9813

LRV 14.7

NCS S 5040-Y80R



w/r = weld rod



† Refer to BRE Green Guide for more details (www.thegreenguide.org.uk)

The closest perceived NCS - Natural Colour System references are quoted for your convenience. For more information see www.ncscolour.com
Light Reflectance Values (LRV) - all colours are tested in accordance with BS8300:2009.

SAFETY FLOORING